

Landau®



Landau®



urbane™

FALL | 2018

STYLE THAT REALLY FITS

Landau
urbane.™



Classic, modern or contemporary –
now you can pick the fit that works
best for you.



FIND YOUR FIT

We know your work is important and the last thing you want to worry about are your scrubs. As a result, Landau has made some changes to our fit guide to help you find the right fit for you. Whether you prefer Urbane, Smitten or Landau, our new universal fit guide and easy-to-use fit classifications will make it simple to pick the fit you want, so you can focus on what really matters.

urbane™

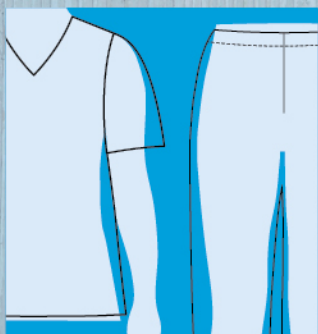
smitten.

Landau

DETERMINE YOUR FIT PREFERENCE

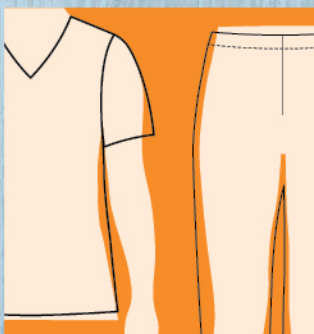
Landau brands now offer three fit categories to make the process of selecting your ideal garments even easier. Each category represents the overall fit of the garment to your body. Just look for these tags next to our styles in this book and in stores soon.

CLASSIC FIT



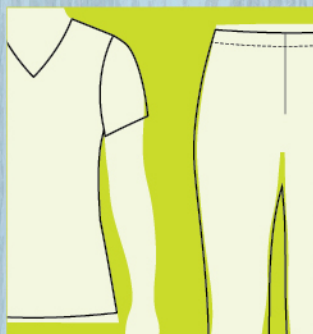
Generously cut to provide optimal comfort and ease of movement.

MODERN FIT



Tailored to flatter your shape without limiting movement.

CONTEMPORARY FIT



Contoured to conform to your body and complement your shape.

IDENTIFY YOUR SIZE

Select the size that is the closest match to your body measurements according to the women's chart below.

TO TAKE YOUR MEASUREMENTS

BUST The measurement over the fullest part of the chest.

WAIST The measurement of the smallest indentation of the natural waistline.

HIPS The measurement of the fullest curve of the hip or approximately 8" below the waistline.

INSEAM/INSIDE LEG The measurement from the top of the inner thigh down to 1" below the ankle bone.

NOTE: For accurate measurements, pull the measuring tape snugly to your body and avoid stretching.

WOMEN'S APPAREL

SIZE	XXS	XS	S	M	L	XL	2X	3X	4X	5X
DRESS/PANT	0	2-4	6-8	10-12	14	16	18-20	22-24	26-28	30-32
BUST	28-29	30-31	32-34	35-37	38-40	41-44	45-48	49-52	53-56	58-60
WAIST	21-22	23-24	25-26	27-29	30-32	33-36	37-40	41-44	45-48	49-52
HIPS	30-31	32-34	35-37	38-40	41-43	44-47	48-51	52-55	56-59	60-63

urbane™



Landau®

NOTE: The women's chart above represents sizing for all the Landau, Urbane and Smitten brands. All garments offer a range of movement, which may vary by style and fit preference.

MEN'S APPAREL

SIZE	XSM	S	M	L	XL	XXL	3XL	4XL	5XL
CHEST	30-32	34-36	38-40	42-44	46-48	50-52	54-56	58-60	62-64
WAIST	24-26	28-30	32-34	36-38	40-42	44-46	48-50	52-54	56-58
HIPS	31-33	34-35	36-38	42-45	46-49	50-53	54-57	58-61	62-65

UNISEX

SIZE	XXS	XSM	S	M	L	XL	XXL	3XL	4XL	5XL
CHEST	27-29	30-32	34-36	38-40	42-44	46-48	50-52	54-56	58-60	62-64
WAIST	23-25	26-28	29-31	32-34	36-38	40-42	44-46	48-50	52-54	56-58
HIP	31-33	34-35	36-38	39-41	42-45	46-49	50-53	54-57	58-61	62-65

NOTE: Unisex inseams approximately 31".

All garments will measure larger than your body measurements to allow for comfort and ease of movement. The difference between your body and the garment measurement is determined by your fit preferences shown on page 4.



Landau®



LANDAU

Landau[®]

GOOD *to* GO

Workwear designed for fit, functionality
and long-lasting comfort.

prewashed COLLECTION

Soft, comfortable fabric
with a “broken in” look and feel.

A. 4125 | Pre-washed V-neck Top

Now you can have both comfort and style with this inset banded V-neckline tunic featuring front and back princess seams for tailored contouring. Pre-washed to provide a “broken in” fashion look. Two oversized top entry pockets provide ample storage. Pockets offer instrument division, additional instrument pocket, as well as three pen loops. Sleeve features a baby sleeve pocket with instrument division. Innovative side vent construction provides maximum movement.

53% cotton/44% polyester/3% spandex

Sizes: XS–5XL*

Medium length: 27 3/8"



MODERN

A



MODERN

B



B. 3035 | Pre-washed Warm-up

Love your layers when you add this comfortable warm-up jacket with a “broken in” fashion look. All colors feature antique silver snaps, crew neckline, and rib knit detail on the cuffs. Storage is not an issue thanks to unique double-layer pockets. The stitched-down belt with multi-needle stitching detail finishes into the front and back princess seams for a comfortable fit, while the double-vented back provides you the movement and freedom you need to get the job done.

53% cotton/44% polyester/3% spandex

Sizes: XS–5XL*

Medium length: 28 3/8"



*See color chart on page 75 for available sizes and colors.

MODERN

C



C. 2036 | Pre-washed Flat Front Cargo

Move with ease in the pre-washed natural flare cargo pant that provides that “broken in” look and feel with plenty of storage. Dual elastic back and inside drawstring front and side slits ensure a comfortable fit, while multi-needle stitching and back darts add fashionable features. Efficiently store all your essentials in two roomy side hand pockets with additional accessory pockets, or in welt cargo found on your right.

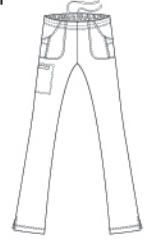
53% cotton/44% polyester/3% spandex

Sizes: XS–5XL (31½" inseam)*

Petite: PXS–P2X (29" inseam)*

Tall: TXS–TXL (33½" inseam)*

- Natural rise
- Straight hip and thigh
- Flare leg



D. 4147 | Pre-washed Surplice Top

Achieve effortless style and comfort in this surplice silhouette top. Saddle shoulder seaming and front and back princess seams stylize and contour, while the pre-washed fabric offers a comfortable “broken in” look and feel. This top also allows you to move freely thanks to side slits and side vents on multi-needle stitched sleeve hem. Two top-load pockets with center accessory pocket and self-fabric loop offer plenty of storage space for pens, badges, and anything else you might need to get the job done.

53% cotton/44% polyester/3% spandex

Sizes: XS–5XL*

Medium length: 26½"



MODERN

D



MODERN

E



E. 2024 | Pre-washed Cargo Pant

The pre-washed cargo pant offers you that “broken in” fashion look with storage to spare. Dual elastic and drawstring waist with modern rise allows for a comfortable fit. Two hip pockets, single cargo with scissor pocket, and two back pockets with secure Velcro flaps keep you ready for anything. Stitched tab pen loops add even more functionality. Featuring a straight leg silhouette with knee seam detail in a garment washed finish, it is sure to become your favorite go-to pant!

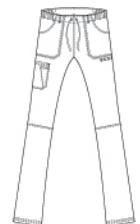
53% cotton/44% polyester/3% spandex

Sizes: XS–5XL (31" inseam)*

Petite: PXS–P2X (29" inseam)*

Tall: TXS–TXL (33½" inseam)*

- Modern rise
- Straight hip and thigh
- Straight leg



UPDATED CLASSICS THAT FLATTER AND FIT

CLASSIC

A



B

A. 8219 | V-Neck Tunic

A classic that comes in a variety of colors—good luck deciding. V-neck with set-in sleeves and four pockets with pencil/instrument division. Four-inch side vents.

65% polyester/35% cotton

Sizes: XS–5XL*

Medium length: 26 7/8"



B. 50001 | Basic Landau Tee

A classic tee goes with everything and never goes out of style. Basic long-sleeve crew neck tee with 1"x1" rib knit collar and double-needle stitched hem.

95% cotton/5% spandex

Sizes: XXS–2XL*

Medium length: 26 1/2"





CLASSIC

MODERN

C

D

C. 7535 | Cardigan Warm-Up

A casual classic as only Landau can do it. Cardigan style warm-up with three-button closure. Five pockets, including two cell phone pockets and one inside pocket.

65% polyester/35% cotton

Sizes: S–5XL*
(XS available in White & Navy)
Medium length: 29½"

**D. 8110 | Rounded V-Neck Tunic**

A true classic made even better with added side slits at hem for ease of movement. Flattering V-neck design, banded trim and accent piping. Princess seams on the front and two angled pockets and four deep lower pockets ensure this top will be a favorite.

65% polyester/35% cotton

Sizes: XS–5XL*
Medium length: 25⅞"



*See color chart on page 73 & 74 for available sizes and colors.

SOUGHT AFTER POPLINS

Our most-popular offerings set the gold standard in the industry. Micro-sanded 65% polyester/35% cotton with soil-release finish makes this the scrub you'll want to wear every day.

CLASSIC

A

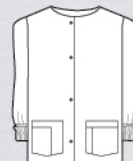
A. 7525 | Warm-Up Jacket

Complete your look with a cozy warm-up that keeps the chill away. Crew neck with four pockets that include pen division and cell phone pocket. Snap-front closure. Knit cuffs.

65% polyester/35% cotton

Sizes: XS-5XL*

Medium length: 29"





CLASSIC

B

B. 8232 | Snap Front V-Neck Tunic

The ultimate efficiency top that makes getting ready for work a snap. V-neck with sewn-down facing, set-in sleeves and four-inch side vents. Snap-front closure. Four pockets include scissor, tape and penlight/instrument division.

65% polyester/35% cotton

Sizes: XS-5XL*

Medium length: 27 3/4"



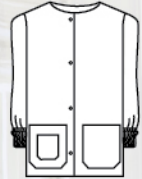
C. 7533 | Drawstring Warm-Up Jacket

Easy to wear with style to spare. This crew neck jacket with tunnel drawstring ties at the back. Two front patch pockets. Right patch pocket has cell phone pocket.

65% polyester/35% cotton

Sizes: XS-5XL* (White only)

Medium length: 30"



CLASSIC

C

THE PANT COLLECTION



CLASSIC

A

CLASSIC

B

CLASSIC

C

A. 8320 | Classic Tapered Leg Pant

A true classic with a covered elastic waistband. Reinforced pockets. Stitched crease on each leg creates a tailored look.

65% polyester/35% cotton

Sizes: XS–5XL (31" inseam)*

Petite: PSX–P3X (28½" inseam)*

Tall: TXS–T3X (33" inseam)*

- Traditional rise
- Relaxed hip & thigh
- Tapered leg



B. 8335 | Natural Flare Leg Pant

A true classic. Full drawstring pant with two front pockets and layered coin pocket.

65% polyester/35% cotton

Sizes: XS–2XL (31" inseam)*

Petite: PSX–P2X (28½" inseam)*

Tall: TXS–TXL (33" inseam)*

- Natural rise
- Relaxed hip & thigh
- Flare leg



C. 8385 | Modern Dual-Pocket Cargo Pant

Combination drawstring front waist with elastic back. Contoured through hips. Deep side waist and cargo pockets. Center seams and side vents.

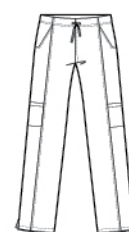
65% polyester/35% cotton

Sizes: XS–2XL (31½" inseam)*

Petite: PXS–P2X (29" inseam)*

Tall: TXS–T2X (33½" inseam)*

- Modern rise
- Relaxed hip & thigh
- Straight leg





CLASSIC

D

CLASSIC

E

CLASSIC

F

D. 8327 | Classic Relaxed Pant

Take comfort to the extreme with our classic relaxed pant. Covered elastic waistband will not bend, itch or roll. Reinforced pockets.

65% polyester/35% cotton

Sizes: XS–5XL (31" inseam)*

Petite: PXS–P3X (28½" inseam)*

Tall: TXS–T3X (33" inseam)*

- Traditional rise
- Relaxed hip & thigh
- Straight leg

**E. 8501 | Classic Cargo Elastic-Waist Pant**

Covered elastic waistband with hidden drawstring. Edge-stitched front seam. Side pockets and layered cargo pockets.

65% polyester/35% cotton

Sizes: XS–3XL (31" inseam)*

Petite: PSX–P3X (28" inseam)*

- Traditional rise
- Relaxed hip & thigh
- Straight leg

**F. 2028 | Women's Updated Cargo**

Comfort meets style with our natural, relaxed flare pant that features a drawstring front with elastic-back waist. This design also provides plenty of storage with two side entry pockets, two layered cargo pockets and an instrument pocket. Side vents on leg allow for easy movement. With all of these features they are sure to be your new workday faves.

65% polyester/35% cotton

Regular: XS–5XL (31" inseam)*

Petite: PXS–P3X (28½" inseam)*

Tall: TXS–T2X (33" inseam)*

- Natural rise
- Relaxed hip & thigh
- Flare leg



UNISEX BASICS

A. 7502 | Unisex Scrub Top

A classic never goes out of style. Reversible V-neck with reinforced neck facing, dolmen sleeves and breast pocket on both sides.

65% polyester/35% cotton

Regular: XS-5XL (27 1/2" length)*

Tall: TSM-T2X (30" length)*



A

A





B. 7602 | Classic Unisex Pant

This is your go-to work pant. A classic reversible scrub pant with drawstring cord and two back pockets.

65% polyester/35% cotton

Regular: XS–5XL (31½" inseam)*

Petite: PXS–P3X (29½" inseam)*

Tall: TSM–T2X (34½" inseam)*



C. 2029 | Unisex Cargo Pant

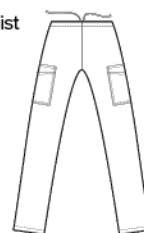
Our classic unisex cargo pant features a full drawstring waist with plenty of storage options. Two roomy layered cargo pockets and an additional back pocket give you room for all your essential gear. With a classic design and updated functionality these pants are a workwear essential.

65% polyester/35% cotton

Regular: XS–5XL (31" inseam)*

Petite: PXS–P3X (28½" inseam)*

Tall: TXS–T2X (33" inseam)*



*See color chart on page 74 for available sizes and colors.

prewashed COLLECTION

Soft, comfortable fabric
with a “broken in” look and feel.

A. 7478 | Men's Pre-washed V-neck Tunic

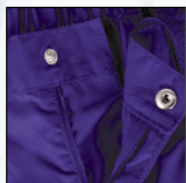
This V-neckline tunic is a perfect fit for the professional who wants a “broken in” look and feel. The front yoke design offers a chest pocket with self-fabric pen loops, while the back features a back yoke and center seam for strength and comfort. Back hem highlights side slits and a drop tail for added coverage. Triple needle stitching around the armhole for reinforced seams ensures durability.

53% cotton/44% polyester/3% spandex

Sizes: S–3XL*
Medium length 30"



B



**Fully functioning fly and
internal drawstring**

B. 2025 | Men's Pre-washed Cargo Pant

This cargo pant offers the comfort you want and the storage you need. With six total pockets, two roomy hip pockets, a cargo pocket on each leg and two back pockets you're sure to find a place for everything. Includes wearer's left cargo pocket with three pen loops. Waistband features a flat front and back elastic with belt loop detail, a zip fly, snap closure, and internal drawstring for added security. Knee darts provide flexibility for bending and stooping.

53% cotton/44% polyester/3% spandex

Regular: S–3XL (31½" inseam)*

Short: SSM–S3X (29½" inseam)*

Tall: TSM–TXL (34" inseam)*



Ripstop

STRETCH

Rugged design, durable ripstop construction, and stretchable flexibility.

C



C. 4127 | Men's Stretch Ripstop V-Neck Top

A legend is born with this comfortable V-neck men's top. Made of ripstop stretch material and featuring double needle stitching, this top can handle even the hardest shifts. Keep track of your items with a patch chest pocket featuring angled loop—perfect for clipping your badge or pens. The stylized back yoke detail includes a handy locker loop, and side vents with drop-tail hem providing extra coverage.

84% cotton/13% polyester/3% spandex stretch ripstop

Sizes: S–3XL*

Medium length: 30"



D



Fully functioning fly and internal drawstring



Fabric detail

D. 2026 | Men's Stretch Ripstop Cargo Pant

Durable ripstop stretch pant for men is made rugged enough for almost any job. Dual waistband features a flat front and elastic-back waist with internal drawstring. Waistband includes hidden snap closure and belt loops, with fully functional zip fly. Two angled hip pockets, a vertical side seam welt cargo pocket with secure Velcro closure, a horizontal welt cargo pocket and two back patch pockets and darts provide ease of movement.

84% cotton/13% polyester/3% spandex stretch ripstop

Regular: S–3XL (31½" inseam)*

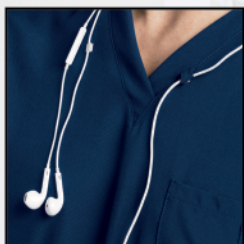
Short: SSM–S3X (28½" inseam)*

Tall: TSM–TXL (33½" inseam)*



*See color chart on page 75 for available sizes and colors.

COMFORT AND STYLE FOR MEN



Features tunnel
for earbud cord

A

A. 4148 | Men's V-Neck Top

This V-neck top is full of handy features that offer the functionality you need to conquer your workday. The banded V-neckline includes a self-tab earbud cord tunnel, and the chest pocket and separate instrument pocket provide ample storage. Double needle top stitching on armhole and back yoke detail increase durability. Made with 4-way stretch fabric with moisture wicking for breathability, this top features side vents and a drop tail hem that allow you to move with comfort throughout your day.

95% polyester/5% spandex

Sizes: S-3XL*

Medium length: 31 1/2"





B. 2034 | Men's Media Cargo Pants

Technology has met its match! Our exposed elastic drawstring-front pant with zip fly features a silicone stripe on the drawstring for a secure fit. Two hip pockets with ear bud cord tunnel allow you to stay connected wherever you go.

The cargo pocket features snap tab for security and the back pocket is ideal for a wallet. These pants are going places!

95% polyester/5% spandex

Regular: S–3XL (31½" inseam)*

Short: SSM–S3X (29½" inseam)*

Tall: TSM–TXL (34" inseam)*



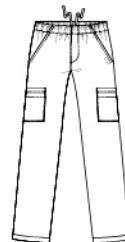
C. 2012 | Men's Stretch Cargo Pants

This contemporary cargo scrub pant features all the assets you love, now with a new lower-rise waist and stretch fabric. Full elastic waistband with inside twill drawstring and zip fly. Two slant pockets, one back pocket with button closure and two double patch cargo pockets.

52% cotton/45% polyester/3% spandex

Regular: S–5XL (31½" inseam)*

Tall: TS–T3X (34" inseam)*



*See color chart on page 74 for available sizes and colors.

EASY-TO-WEAR LOOKS FOR MEN

A

A. 7594 | Men's Vented Scrub Top

V-neck pullover, one breast pocket with pen division and felled-seam back yoke. Set-in sleeves with a two-inch vented mesh gusset.

65% polyester/35% cotton

Sizes: S-5XL*

Medium length: 30"



B

B. 8555 | Men's Cargo Pants

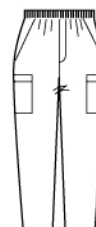
Two side pockets with inside coin division on the right. One back pocket with button closure and two mid-thigh, double patch pockets. Non-roll 1½" elastic waistband with inside braided drawstring and zipper front.

65% polyester/35% cotton

Regular: S-5XL (31" inseam)*

Short: SSM-S3X (28½" inseam)*

Tall: TM-T3X (33½" inseam)*



C. 4142 | Men's Media V-Neck Top

Look sharp in this banded V-neck top with tech-friendly features such as self-tab ear bud cord tunnel and welt chest pocket with silicone snap PED (personal electronic device) closure. Rib-knit accent on the shoulder and elastic inset along the bottom hem at the side provide outstanding fit and full range of motion. Drop-tail hem and center back seam make for a great look, and moisture-wicking fabric offers quick-drying convenience. Now it's easy to stay connected and stay on the go in style.

95% polyester/5% spandex

Sizes: S-3XL*

Medium length: 31"

**D. 2037 | Men's Drawstring Cargo Pants**

Versatile and comfortable, our drawstring cargo pants are made with 4-way stretch fabric for movement and plenty of pocket storage. Two hip pockets with fabric inset detail, cargo pocket with a separate instrument pocket, and an additional back pocket give you space to store all your workday necessities. Snap waistband includes internal drawstring with silicone stripe for an extra secure tie, elastic back waist, as well as functional belt loops and fully functional fly.

95% polyester/5% spandex

Regular: S-3XL (31 1/2" inseam)*

Short: SSM-S3X (29 1/2" inseam)*

Tall: TSM-TXL (34" inseam)*

**C****D**

*See color chart on page 74 & 75 for available sizes and colors.

A. 4098 | Men's Stretch V-Neck Top

Your go-to workday top in comfortable stretch fabric. Men's V-neck with forward shoulder and back yoke. Chest pocket with instrument pocket and bungee loop. Side slits at the hem.

52% cotton/45% polyester/3% spandex

Sizes: S–5XL*

Medium length: 30 1/4"



A



B

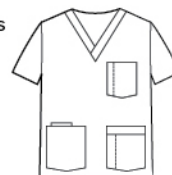
B. 7489 | Men's 5-Pocket Scrub Top

Easy-to-wear V-neck pullover with one breast pocket and two lower layered pockets on the left side. Single pocket with interior cell phone division on the right. Locker loop.

65% polyester/35% cotton

Regular: S–5XL (30 1/2" length)*

Tall: TS–T2X (32 1/2" length)*



C

C. 8550 | Men's Elastic-Waist Pants

Non-roll 1 1/2" elastic waistband with inside braided drawstring and zipper-fly front. Two pockets with coin division. Button-closure back pocket.

65% polyester/35% cotton

Regular: S–5XL (31" inseam)*

Short: SSM–S3X (28 1/2" inseam)*

Tall: TS–TXL (33 1/2" inseam)*



GO-TO FAVORTIES FOR MEN

D. 7551 | Men's Warm-Up Jacket

Get noticed for your skills and your style in this four-pocket warm-up jacket. Snap-front, rib-knit neck and cuffs. Two deep pockets, phone pocket and inside breast pocket.

65% polyester/35% cotton

Sizes: S-5XL*

Medium length: 31 1/2"



Landau

*See color chart on page 74 & 75 for available sizes and colors.

all day[™]
by Landau

Move with ease in our new
Mechanical Stretch fabric
that is stylish, soft and flexible.

UNISEX

A

A. 4139 | All Day Unisex V-Neck Top

Finally, you can have a stylish-yet-practical unisex V-neck top that meets the demands of your workday. Featuring our unique Mechanical Stretch fabric, this top offers side vents and a drop tail hem, providing a contemporary look with a full range of motion. Plus, you'll love the timesaving convenience of the instrument divider in the chest pocket. Designed to fit both men and women, this top offers maximum comfort and durable good looks.

65% polyester/35% cotton

Regular: XS-5XL*
Medium length 29"





B. 3507 | All Day Snap Front Warm-Up

You're sure to make a statement in this contemporary-fit warm-up jacket with Mechanical Stretch. Offering a snap-front closure, jewel neck and rib-knit sleeve cuff, this warm-up has everything you need to stay moving. Featuring two spacious top-entry pockets, side vents and back waist darts, it provides exceptional contouring and style.

65% polyester/35% cotton

Regular: XS-5XL*

Medium length 28 $\frac{3}{8}$ "



C. 4143 | All Day Y-Neck Tunic

The style you want meets the features and flexibility you need in this eye-catching tunic with Mechanical Stretch. A Y-neckline with box stitched placket and notched side hem detail give this tunic a touch of class while two roomy top-entry pockets (one with instrument dividers) provide ample storage. If you're looking to add a staple to your wardrobe, this is the top for you.

65% polyester/35% cotton

Sizes: XS-5XL*

Medium length 28 $\frac{1}{8}$ "



D. 2035 | All Day Full Elastic Cargo Pant

Our natural-rise cargo pant features our Mechanical Stretch fabric for all day movement. Exposed full-elastic waist with front drawstring and handy silicone grips ensure a secure fit. Side vents with notched hem detail and a stylish flare leg opening provide contemporary flair. Two roomy top-applied hip pockets and a cargo pocket with instrument divider let you keep whatever you need right where you need it.

65% polyester/35% cotton

Regular: XS-5XL (31" inseam)*

Petite: PXS-P2X (29" inseam)*

Tall: TXS-TXL (33" inseam)*



*See color chart on page 75 for available sizes and colors.

ary-fit
uff, this
Featuring
k waist



DERN

al Stretch
ist with
secure
n flare leg
o-applied
vider let
d it.



d colors.



E

UNISEX

**E. 2032 | All Day
Unisex Cargo Pant**

Put your best foot forward in our straight-leg unisex cargo scrub pant with full drawstring waist. Besides a stylized fit, you'll also get a kick out of how our Mechanical Stretch fabric keeps you comfortable while on the move. Need pockets? We've got you covered with a single back top-applied pocket plus convenient cargo pocket with instrument divider.

65% polyester/35% cotton
















Regular: XS-5XL (31½" inseam)*

Petite: PXS-P3X (29" inseam)*

Tall: TXS-T2X (33½" inseam)*



COLOR CHART

		RIPSTOP		PREWASHED						ALL DAY						
MEN'S PANTS		MEN'S		WOMEN'S						MEN'S		UNISEX		WOMEN'S		
																
8550 S-5XL 31" INSEAM 65% POLY/ 35% COTTON	2037 S-3XL 31½" LENGTH 95% POLY/ 5% SPANDEX	4127 S-3XL 30" LENGTH 84% COTTON/ 13% POLY/ 3% SPANDEX	2026 S-3XL 31½" INSEAM 84% COTTON/ 13% POLY/ 3% SPANDEX	4125 XS-5XL 27½" LENGTH 53% COTTON/ 44% POLY/ 3% SPANDEX	2024 XS-5XL 31" INSEAM 53% COTTON/ 44% POLY/ 3% SPANDEX	2036 XS-5XL 31½" INSEAM 53% COTTON/ 44% POLY/ 3% SPANDEX	4147 XS-5XL 26½" LENGTH 53% COTTON/ 44% POLY/ 3% SPANDEX	3035 XS-5XL 28½" LENGTH 53% COTTON/ 44% POLY/ 3% SPANDEX	7478 S-3XL 30" LENGTH 53% COTTON/ 44% POLY/ 3% SPANDEX	2025 S-3XL 31½" INSEAM 53% COTTON/ 44% POLY/ 3% SPANDEX	4189 XS-5XL 29" LENGTH 65% POLY/ 35% COTTON	2032 XS-5XL 31½" INSEAM (M) 65% POLY/ 35% COTTON	4143 XS-5XL 28½" LENGTH 65% POLY/ 35% COTTON	3507 XS-5XL 28½" LENGTH 65% POLY/ 35% COTTON	2035 XS-5XL 31" INSEAM 65% POLY/ 35% COTTON	
T, S3	T, S3		S3, T		P2, T	P2, T	†			S3, T		P3, T2			P2, T	
T, S3	T, S3		S3, T		P2, T	P2, T	†			S3, T		P3, T2			P2, T	
S, T					P2, T	P2, T	†			S3, T		P3, T2			P2, T	
T	T, S3		S3, T		P2, T	P2, T	†			S3, T		P3, T2			P2, T	
			S3, T		P2, T	P2, T	†			S3, T		P3, T2			P2, T	
	T, S3		S3, T		P2, T	P2, T	†			S3, T		P3, T2			P2, T	
			S3, T		P2, T	P2, T	†			S3, T		P3, T2			P2, T	
T			S3, T		P2, T	P2, T	†			S3, T		P3, T2			P2, T	
					P2, T	P2, T	†			S3, T						
					P2, T					S3, T		P3, T2			P2, T	
		S3, T		P2, T	P2, T	†				S3, T						
	S3, T		P2, T							S3, T						
			P2, T	P2, T	†				S3, T		P3, T2				P2, T	
			P2, T	P2, T	†						P3, T2				P2, T	
			P2, T	P2, T	†											

†	P2, T,†	P2, T,†	†
	P2, T,†		
	P2, T,†		

*Select colors while supplies last.

Landau Group Guarantee

Landau Guaranteed product that is always available, in a variety of styles and sizes to fit every budget.

LAB COATS THAT GO THE LENGTH

A. 3178 | Unisex Cover Coat

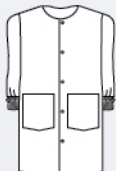
Keep it simple with this unisex cover coat. Featuring two patch pockets, rounded neck, stockinette cuffs and five-snap closure, this coat covers all the bases.

65% polyester/35% cotton

White (WWP)

Sizes: XS-3XL

Length: 41 3/4" (Size 10)



A



B



B. 8726 | Women's Lab Coat

One great coat. This classic three-button lab coat features one breast pocket and two large lower pockets. For style we've added a notched lapel, button-tab back belt, and front and back princess seams.

65% polyester/35% cotton

White Poplin (WWXY)

Sizes: XS-3XL

Length: 31 3/8"



C



C. 3230 | Women's Consultation Coat

No need to get a second opinion; this consultation jacket is truly stylish. Featuring two-button closure, three outside pockets and two lower inside pockets, this jacket style coat is a great functional layering piece.

65% polyester/35% combed cotton

White (WWY)

Sizes: 0-20, 40-44

Length: 28 1/2" (Size 10)



D



D. 3187 | Unisex Lab Coat

Long coat with traditional collar and four-button front closure.

One breast pocket and two lower double pockets.

Two side-entry pockets on seam.

65% polyester/35% cotton

White (WWY)

Sizes: XS-3XL

Length: 39"



E



E. 8708 | Professional Lab Coat

Traditional collar and lapel with small zip breast pocket.

Front and back tailored darts with top-stitching.

Two large front pockets and small pocket on top. Set-in back belt.

65% polyester/35% combed cotton

White (WWY)

Sizes: XS-3XL

Length: 30 1/2" (Size 10)





A. 3155 | Women's Lab Coat

Designed to please, this four-button lab coat with fitted back and single-button belt adds a dash of style to your day. Three pockets with side hand access provide you easy access while keeping all your instruments nearby.

65% polyester/35% cotton

Navy (BNP)

Sizes: 4-20, 40-48

White (WWXYA)

Antimicrobial

Sizes: 0-20

White (WWY)

Sizes: 0-20, 40-52

Length: 38" (Size 10)



B. 3172 | Knot Button Lab Coat

"Knot" your average lab coat! Featuring a notch collar lapel and five cloth knot buttons along the front placket, this lab coat provides a professional look with style and function. Two roomy lower patch pockets and a chest pocket with instrument division give storage to spare. Plus, its center back vent gives you extra mobility at work.

100% cotton

White (WWF)

Sizes 0-20

Medium

length: 36 1/4"

(Size 10)



C. 3165 | Women's Traditional Notebook Lab Coat

A full-length lab coat designed for a notebook. One breast pocket with pencil division. Two lower pockets. Two oversized inside pockets for your notebook or tablet PC. Mesh ID pocket. Angled flaps secure pocket contents. Three-button closure. Sewn back belt. Kick vent.

65% polyester/35% cotton

White (WWXY)

Sizes: 2-20, 40-42

Length: 36 3/4"

(Size 10)



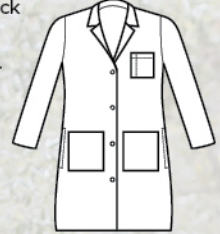
WOMEN'S LAB COATS

D. 3153 | Women's Lab Coat

This stylish four-button lab coat features back belt accent, side hand access, three front pockets and two inside pockets.

**65% polyester/
35% combed cotton performance twill**
White (WWVC)

**Sizes: 0-20
Length: 38" (Size 10)**



E. 3194 | Women's Lab Coat

This four-button lab coat is a great basic, built with style. Two inset pockets add function while mock back belt and princess seams add detail.

65% polyester/35% combed cotton
White (WWY)

**Sizes: 6-20
Length: 31½" (Size 10)**



STUDENT STYLE

The quality and durability preferred by professionals. Landau offers a comprehensive student uniform program with selection and customization options available.

A

A. 8052 | Student Dress

Look confident in this smart short-sleeve dress. Two inset pockets with layered pocket on the right hold your essentials while princess lines slim your silhouette. This eight-button front closure dress is easy to toss on for your dash to work or school.

65% polyester/35% cotton

White (WWY)

Sizes: XS–5XL

Medium length: 42½"

Ribbon placement not available on style 8052.



B. 8058 | Student Tunic

Full-front zip closure makes this clean-cut student tunic cute and easy to wear. Pleat shoulder detail gives it style while the two patch pockets keep your instruments close at hand.

65% polyester/35% cotton

White (WWY)

Sizes: XS-5XL

Medium length: 28 ¼"

**C. 2226 | A-Line Skirt**

Classic nursing apparel has never looked better! This elastic waist A-line skirt with deep side pockets and back kick vent will let you move while your busy day soldiers on.

65% polyester/35% cotton

White (WWP)

Sizes: XS-3XL

Medium length: 29 ½"



STYLE THAT REALLY FITS

A

A. 8047 | Student Tunic

Tailored style with button-front closure.

Optional colored piping insets at princess seams and sleeve hem.

Double pockets on the right and a single pocket on left. Side vents.

65% polyester/35% cotton

Sizes: XS–5XL

Medium length: 29 ½"

Colored piping available:
Navy (WNAV), Royal (WROY),
White (WWY)



B. 8059 | Women's Tunic

This rounded hem tunic is a great basic for your wardrobe. With a V-neck collar, three patch pockets and button-front closure, this tunic is simple and stylish.

65% polyester/35% cotton

White (WWY)

Sizes: XS-5XL

Medium length: 28"

Ribbon placement available, see top right.



C. 8051 | Tailored Tunic

Get the longer look of a tunic with the polish of a collared jacket in this functional top. Princess lines slim while the front button closure is practical and pretty.

65% polyester/35% cotton

White (WWY)

Sizes: XS-5XL

Medium length: 28"

Ribbon placement available, see top right.



THREE CUSTOMIZABLE PLACEMENT OPTIONS



HOW IT WORKS:

Style 8059 WWY and 8051 WWY can be customized using grosgrain ribbon.

Ribbon available in the following seven colors: Navy, Red, Orange, Forest, Royal Blue, Gold, Burgundy. Allow 7-10 business days to ship.



PROFESSIONAL STYLES FOR MEN

A. 3140 | Traditional Lab Coat

Full-length coat with five-button closure, side hand access, belted back stitched over pleats. Three front pockets.

100% cotton White (WWF)

65% polyester/35% twill
cotton White (WWT)

Sizes: 32-52
Length: 43½"
(Size 40)



A

TRADITIONAL
TAILORED
COLLAR

THREE
EXTERIOR
FRONT
POCKETS

CUSTOM PERSONALIZATION



PERSONALIZATION MAKES ALL
THE DIFFERENCE. LANDAU OFFERS
CUSTOM PERSONALIZATION.

ADD YOUR NAME, SPECIALTY,
ORGANIZATION OR LOGO TO
YOUR GARMENT TO COMPLETE
YOUR PROFESSIONAL LOOK.

BACK DETAIL FOR MEN'S STYLES

1140, 3124, 3132,
3138, 3140, 3148,
3163, 3166, 3174



**B. 3132 | Men's Lab Coat**

Full-length lab coat features four-button closure and a belted back sewn over pleats with side hand access. Three front pockets.

**65% polyester/
35% combed cotton**

White (WWY)
Sizes: 32–52
Length: 39½"
(Size 40)

**C. 3148 | Men's Lab Coat**

Staff-length coat with four-button closure and three front pockets. Sewn-down back belt over pleats.

**65% polyester/
35% combed cotton**

White (WWY)
Sizes: 32–56
Length: 35½" (Size 40)

**D. 3166 | Men's Lab Coat**

Features four-button front closure, stitched-down back belt over pleats, and three front pockets. Two lower inside pockets and side hand access.

**65% polyester/
35% combed cotton**

White (WWY)
Sizes: 32–52
Length: 35½"
(Size 40)





A. 3145 | Men's Lab Coat

Tailored full-length lab coat. Three front pockets. Five-button closure with a straight back and side hand access.

65% polyester/35% cotton

White (WWXYA)

Antimicrobial Sizes:
32-52

White (WWY)

Sizes: 32-56, 38T-56T
Length: 41½" (Size 40)
Tall (2" extra sleeve length)



B. 3174 | Men's Notebook Lab Coat

Staff-length lab coat. Two oversized inside pockets for your notebook. One breast pocket with pencil division and two lower outside pockets. Mesh ID pocket. Angled flaps secure pocket contents. Four-button closure. Sewn back belt. Kick vent.

65% polyester/35% combed cotton

White (WWXY)

Sizes: 32-52
Length: 36¾" (Size 40)



C. 1140 | Men's Professional Jacket

An instant classic. Zipper-front jacket. Four pockets, including two inset breast pockets and two lower pockets. Back belt sewn over pleats.

65% polyester/35% combed cotton

Navy (WSL), White (WWY)

Sizes: 32-52

Sizes: 32-56 White
Length: 31" (Size 40)





D. 3224 | Men's Lab Coat

Two-piece vented-back lab coat with three-button front closure. Three outer pockets and two lower inside pockets.

65% polyester/35% cotton

White Twill (WWT)

**Sizes: 32-52,
38T-52T**

**White Poplin
(WWY)**

Sizes: 32-52

**Length: Regular
30 3/4" (Size 40),
Tall 32 3/4" (Size 40)
Tall (2" extra
sleeve and length)**



E. 3200 | Men's Jacket

Two-piece straight back blazer with two-button closure and three outside pockets.

65% polyester/35% combed cotton

White (WWY)

**Sizes: 32-52
Length: 31 1/4" (Size 40)**



F. 3163 | Men's Consultation Coat

Tailored style, four-button closure, belted back stitched over pleats. Three front pockets and side hand access.

65% polyester/35% cotton twill

White (WWT)

**65% polyester/
35% combed cotton**

Navy (BNP)

**Sizes: 32-52
Length: 35"
(Size 40)**





A

B

A. 3138 | Men's Lab Coat

Full-length coat with five cloth-knot buttons, side hand access and three patch pockets. Sewn-down back belt over pleats.

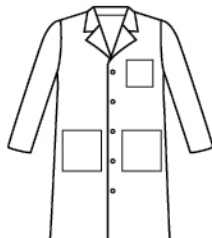
100% cotton super twill

White (WWF)

Sizes: 32–52, 40T–50T

Length: 44½" (Size 40)

Tall (2" extra sleeve and length)



B. 3124 | Men's Lab Coat

Look professional in our four-button lab coat.

Three front pockets, two inside pockets and side hand access points. Sewn-down back belt over pleats.

100% cotton

White Super Twill (WWF)

Sizes: 32–56

65% polyester/35% cotton

**White Micro-sanded Twill (WWSC),
White Performance Twill (WWVC)**

Sizes: 32–56, Tall 38T–56T

**Length: Regular 37" (Size 40),
Tall (2" extra sleeve and length)**



A TOUCH OF STYLE



C. 3139 | Men's Lab Coat

Knee-length lab coat features five-button closure, one-piece straight back, side hand access and three front pockets.

65% polyester/
35% cotton twill

White (WWT)

Sizes: 32-52

Length: 40½" (Size 40)



UNISEX LOOKS EVERYONE LOVES



D

D. 71221 | Unisex Scrub Top

Both men and women can finally agree on something. V-neck unisex style. Dolman sleeves. Back yoke. One chest pocket with pen division.

65% polyester/35% cotton

Sizes: XXS-5XL*

Medium length: 27½"





A. 70221 | V-Neck Tunic

All the right moves at exactly the right value. V-neck style. Short set-in sleeves. Two large, top-loading patch pockets. Hidden accessory tape inside right pocket. Cell phone pocket. Side vents for movement.

65% polyester/35% cotton

Sizes: XXS–5XL*

Medium length: 27³/₈"

Select colors in XXS*



B. 70224 | Faux Wrap Tunic

Practical makes perfect. V-neck faux wrap tunic with set-in sleeves. Two large, top-loading patch pockets. Two contouring back darts. Hidden accessory tape inside right pocket. Side vents.

65% polyester/35% cotton

Sizes: XS–5XL*

Medium length: 26"



C. 86002 | Three-Button Lab

A new classic you can count on. Three-button lab coat with notch lapel collar and three pockets—one chest pocket and two lower patch pockets.

65% polyester/35% cotton

Sizes: XXS–5XL*

Medium length: 35"





A

CLASSIC

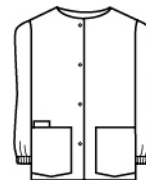
A. 75221 | Warm-Up Jacket

Like you, this durable jacket is always ready to work. Jewel neckline with four pockets that include pen division and cell phone pocket. Snap-front closure.

65% polyester/35% cotton

Sizes: XS–5XL*

Medium length: 27 7/8"



B. 70223 | Snap-Front Tunic

Achieve a professional look in a snap. Notch neckline.

Matching snap-ring closures. Set-in sleeves.

Two large, top-loading patch pockets. Front and

back princess seams. Hidden accessory tape

inside right pocket. Side vents for movement.

65% polyester/35% cotton

Sizes: XS–5XL*

Medium length: 26 7/8"



MODERN

B



CLASSIC

C

C. 83221 | Women's Cargo Pant

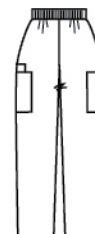
Pull-on style with covered elastic waistband. Two patch pockets and one cell phone pocket. Reinforced seams at stride and inside leg for strength.

65% polyester/35% cotton

Sizes: XXS–5XL (31 1/2" inseam)*

PXS–P3X (29" inseam)*

TXS–T3X (33" inseam)*



VALUE MEETS STYLE

When value is just as important as comfort, ScrubZone® fits the bill. They are constructed to work tough and fit comfortably.

D. 85221 | Unisex Scrub Pant

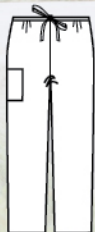
Adjustable, soft-webbed drawcord waist. Double-needled cargo and back pockets. Reinforced seams at stride and inside leg for strength.

65% polyester/35% cotton

Sizes: XS-5XL (31½" inseam)*

PXS-P3X (29" inseam)*

Talls: TSM-T2X (33½" inseam)*



*See color chart on page 95 for available sizes and colors.

AFFORDABLE COMFORT

A. 83222 | Flare Leg Pant

Drawstring front and elastic-back waist.
Two side-seam pockets. One back pocket.
Side vents.

65% polyester/35% cotton

Sizes: XXS–5XL (31½" inseam)*

Petite: PXXS–P3X (29" inseam)*

Tall: TXS–T3X (33½" inseam)*



MODERN

A



SCRUBZONE® COLOR CHART

TOP COLORS
& STYLES
P2=UP TO P2X
P3=UP TO P3X
T2=UP TO T2X
T3=UP TO T3X
XXS=XX SMALL
PXX=PETITE XX SMALL
Colors listed in
order of popularity

WOMEN'S						UNISEX		
70224 XS-5XL 26" LENGTH 65% POLY/ 35% COTTON	70221 XXS-5XL 27 1/4" LENGTH 65% POLY/ 35% COTTON	70223 XS-5XL 26 3/4" LENGTH 65% POLY/ 35% COTTON	75221 XS-5XL 27 1/4" LENGTH 65% POLY/ 35% COTTON	83222 XXS-5XL 31 1/2" INSEAM (M) 65% POLY/ 35% COTTON	83221 XXS-5XL 31 1/2" INSEAM (M) 65% POLY/ 35% COTTON	71221 XXS-5XL 27 1/2" LENGTH 65% POLY/ 35% COTTON	85221 XS-5XL 31 1/2" INSEAM (M) 65% POLY/ 35% COTTON	86002 XXS-5XL 35" LENGTH 65% POLY/ 35% COTTON

Black		XXS			PXX, P2, T2	PXX, XXS, P3, T3	XXS	PXX, P3, T2
Navy		XXS			PXX, P2, T2	PXX, XXS, P3, T3	XXS	PXX, P3, T2
White					P2, T2	P3, T3		P3, T2
Royal		XXS			PXX, P2, T2	PXX, P3, T3	XXS	PXX, P2, T2
Ceil		XXS	†		PXX, P2, T2	PXX, XXS, P3, T3	XXS	PXX, P2, T2
Grey		XXS	†		PXX, P2, T2	PXX, XXS, P3, T3	XXS	PXX, P2, T2
Wine		XXS	†		PXX, P2, T2	PXX, P3, T3	XXS	PXX, P2, T2
Hunter			†		P2, T2	P3, T3		P3, T2
Teal			†		P2, T2	P3, T3		
Caribbean			†		P2, T2, †	P3, T3		
Sand					P2, T2	XXS, P3, T3		
Graphite			†		P2, T2	P3, T3		P3, T2
Cobalt				†	P2, T2, †	P3, T3		
Grape					P2, T2, †	P3, T3		
Pink		†			P2, T2, †	P3, T3	†	
Red					P2, T2, †	P3, T3		
Brown	†		†		P2, T2	XXS, P3, T3	†	
Nautical								P3, T2
Orchid		†			P2, T2	P3, T3	†	

*Select colors while supplies last.

Landau Group Guarantee

Landau Guaranteed product that is always available, in a variety of styles and sizes to fit every budget.

ACCESSORIES



Landau®



urbane™ 

WE'VE GOT
YOU COVERED

Be your best with our stylish,
functional accessories.

STEP UP

YOUR WORK STYLE



A. Remedy

Stylish women's clog features the anti-fatigue rocker bottom with contoured foot bed and shock absorption to provide comfort and flair. A memory foam inner sole and branded treads offer a slip-resistant comfortable walk during shifts. Ultra-light shoe construction with molded outer sole provides stability and minimizes risk of ankle injury.

Black patent leather, Blue Leopard, Multicopper
5-11 whole sizes

Polyurethane/synthetic leather

Landau®



B

B. Vitality

New women's leather-exterior clog featuring our unique floral inlaid pattern. Complete with anti-fatigue rocker bottom, contoured foot bed and shock absorption to provide comfort. Memory foam inner sole and textured tread offer a comfortable and slip-resistant stride. Light shoe construction also offers stability and minimizes risk of ankle injury and discomfort.

Black, White
5-11 whole sizes

Tooled leather



C

C. Energize

Scrubzone's lightweight unisex clog designed for a secure fit and easy on/off entry. Non-marking outsole meets ASTM F1677 Mark II Slip Resistant rating when tested on wet floors. Shock-absorbing EVA midsole ensures long-lasting comfort.

Black, White
5-12, M4-M13 whole sizes



D

D. Comfort | Our #1 Selling Shoe!

Unisex clog with an enhanced slip-resistant all-rubber outsole and removable pillow-top EVA contoured foot bed for shock-absorbing comfort and arch support. Higher wedge heel to reduce back strain. Closed back design for a secure fit and easy on/off entry. Anti-bacterial, moisture-wicking Poliyou® sockliner keeps feet dry while minimizing odor. Good for high-fluid environments.

Black, White
5-12, M4-M13 whole sizes

E. Excel Mesh Athletic Shoe

Make your move in a shoe with true style. Urbane's Excel shoe features a multi-pattern knit and split leather suede design ensuring this shoe is fashionable, breathable and lightweight on your feet. Complete with shock-absorbing foot bed, slip-resistant rubber sole and bungee toggle lace for a secure fit, there is no place these shoes can't take you. These shoes are also 100% washable, making them easy to wear and easy to care for.

Black, Pink or Green
Euro 36-42 U.S. 5-11



G. Heartthrob

It's all about heart, and we've got it with Smitten's Heartthrob fashion shoe. This polyurethane-coated leather clog features quilted Smitten heart pattern for a look that is anything but sweet.

A decorative bold Smitten Pink band accents the shoe with a pop of color while memory foam mid-sole and anti-fatigue rocker bottom soles provide the comfort and shock absorption you need. It's time, show them your heart.

Polyurethane-coated patent leather
Euro 35-42 U.S. 5-11

F. Take Flight

Give your feet wings in high tops that mean business. Featuring our signature Smitten logo, heart and wings. Smitten pink accent stripe adds a touch of flair while the traditional laces offer you a retro feel. Non-slip textured tread with iconic Smitten logo offers you a safe and stylish option to your everyday footwear.

100% polyurethane leather upper
100% polyester mesh knit inner
Rubber toe cap and bottom sole
Euro 35-42 U.S. 5-11



H. Wild@Heart

Ready. Set. Safari! Nothing says fun like these Smitten, zebra-inspired clogs. Our polyurethane-coated patent leather clog with slip-resistant tread features a black and white zebra print pattern. A memory foam mid-sole and anti-fatigue rocker bottom provide the best in comfort and shock absorption so you can strut in style.

Zebra and Leopard
Polyurethane-coated leather
Euro 35-42 U.S. 5-11

ENERGIZE

YOUR FEET AND LEGS



NEW

A

NEW A. L50001 | Landau Men's Compression Socks

Put your best foot forward in these hard-working socks with graduated compression and comfort toe seam. Featuring an athletic-inspired graphic, this antimicrobial sock prevents the harmful growth of bacteria while blocking sweat and odor. Lightweight compression of 8–15mm/hg ensures your feet and legs stay resilient. And, like you, they are built to last whatever the day can bring.

80% nylon/20% spandex
Black/Grey/Blue (BKGBL)
One Size: fits sizes 9–11



B

B. 14300/14317 | Compression Knee High Socks

Unique design helps reduce swelling, improves circulation, and energizes feet and legs. Roomy toe pocket for unrestricted movement. 10–15 mm/hg gradient compression. Comfort band that won't slip or bind.

95% nylon/5% Lycra®
White, Black
Small/Medium: sizes 5–8.5 Large: sizes 9–11

Landau®

C. L41002 | I Heart Nursing Socks

Like you, a true classic never goes out of style. That's why our I Heart Nursing compression sock was made just for you and all you do. Offering 8–15 mm/hg lightweight gradient compression, as well as antimicrobial and odor-resistant properties, this sock is designed to help prevent the growth of harmful bacteria and block sweat and odor. A comfort toe seam provides you additional comfort. Bottom sole features inspirational "I Heart Nursing" statement to keep you enthused throughout your day.

72% polyester/21% cotton/4% spandex/3% nylon
Teal/Grey (TGLN) White/Pink (PWLN)
One Size: fits sizes 9–11



C

C

D. L41006 | Peace, Love and Nursing Compression Socks

Spread the love in our “Peace, Love and Nursing” compression socks from Landau. Our lightweight 8–15 mm/hg gradient compression socks provide antimicrobial and odor-resistant properties to help prevent the growth of harmful bacteria and block sweat and odor. A comfort toe seam provides you additional comfort and confidence as you work. Bottom sole features a fun nursing expression to keep you on the move.

72% polyester/21% cotton/4% spandex/3% nylon
Grey Peace Love (GPCLV)
One Size: fits sizes 9-11

**E. L41007 | I Heal, I Care Compression Socks**

A heart can heal anything, especially in our lightweight 8–15 mm/hg gradient “I Heal, I Care” compression socks. They provide antimicrobial and odor-resistant properties to help prevent the growth of harmful bacteria and help eliminate sweat and odor. Comfort toe seam offers additional support. Available in two great color combinations, these socks provide all day comfort with a fun way to energize you through your day.

72% polyester/21% cotton/4% spandex/3% nylon
Teal I Heal, I Care (TIHIC)
Lime I Heal, I Care (LIHIC)
One Size: fits sizes 9-11

**NEW F. L41010 | Nurse Life Compression Socks**

We know how long you're on your feet, that's why we've designed socks that can keep up with you. Our Nurse Life compression sock is designed to take on anything you can. Fabricated with 8–15mm/hg lightweight gradient compression, comfort toe seam to prevent bunching and odor-resistant antimicrobial fabric that keeps you fresh, dry and comfortable. Bottom sole features inspirational “Nurse Life” statement as a reminder of what nursing is all about.

75% polyester/21% cotton/2% spandex/2% nylon
White/Purple (WHPNL)
One Size: fits sizes 9-11

**NEW G. L41009 | Never Give Up Compression Socks**

Long days on your feet demand socks that are designed to go the distance. Our Never Give Up compression sock not only looks great, but were designed to go the distance with 8-15mm/hg lightweight gradient compression and a comfort toe seam that prevents bunching. Antimicrobial odor-resistant fabric helps block sweat and odor to help you stay cool and dry all shift long. Bottom sole features a motivational reminder that like you, these socks “Never Give Up”.

75% polyester/21% cotton/2% spandex/2% nylon
Heather Grey (HGNG)
One Size: fits sizes 9-11





Focus

A



Intensity

A. U30001 | Urbane No Show Socks

Looking for the right sock? You've found it! Our Urbane No Show Sock is equipped with flat seam toe, arch support and an ankle welt to keep your sock secure. Non-slip Y-heel for superior fit and moisture wicking to keep you dry. Available in two great color combinations you and your feet are sure to enjoy.

85%nylon/12%polyester/2% spandex/1% rubber

Print/Color Code:

Focus – (FOCUS)

Intensity – (INTSY)

Tenacity – (TNCTY)

Uplift – (UPLFT)

One Size: fits sizes 9–11



Tenacity



Uplift



Inspire



B



Strength

B. U30002 | Urbane Balance Athletic Socks

The Urbane Balance Sock is a sure way to keep you and your feet comfortable all day long. Complete with a flat toe seam to reduce bulk, single heel tab for blister protection and arch support. A half cushioned pad aids in shock absorption while added moisture wicking helps keep your feet feel dry.

85%nylon/12%polyester/2% spandex/1% rubber

Print/Color Code:

Inspire – (INSPIR)

Strength – (STRTH)

One Size: fits sizes 9–11





NEW

Exhilarate

C

NEW C. U30003 | Urbane Quick Cool Socks

Treat your feet to our Quick Cool thermo-regulating socks. Complete with cooling panels, these socks are designed with your busy day in mind. Additional features include a breathable mesh top, cushion pad and built-in arch for added comfort and support. For a sock that is guaranteed to put a little pep in your step, look no further. Added moisture wicking helps keep your feet feel dry.

96% polyester/2% rubber/2% spandex

Print/Color Code:

Exhilarate – (EXHLR)

One Size: fits sizes 9–11

urbane®



NEW

Ruby Star

D

NEW D. U40001 | Urbane Compression Socks

Your work day can be long, but our Urbane compression socks are up for the challenge. Designed to add a little personality and function to your day these socks keep you going in comfort and style. Complete with 8–15mm/hg graduated compression, comfort toe seam to prevent bunching and odor-resistant antimicrobial fabric that keeps you fresh, dry and comfortable.

80% nylon/20% spandex

Print/Color Code:

Ruby Star – (RSTAR)

One Size: fits sizes 9–11



Alternative



Frequency



Baseline



Tempo



Classic Rock



VIPP

A

A. S403004 | Active Rock Socks

Pump up your style with Smitten no-show athletic socks in fun solids and prints that are sure to keep you moving. Complete with seamless toe to reduce bulk, single tab welt for blister protection, arch support and half cushion pad for shock absorption. These socks bring all the comfort you need.

97% polyester/2% spandex/1% rubber* Baseline – (BSSLN) Alternative – (ALTER) Frequency – (FRNQY) Tempo – (TEMPO) Classic Rock – (CROCK) VIPP – (VIPP) One Size: fits sizes 9–11

TOP SOCKS

FOR YOUR
WORK STYLE



Raccoon Roll

B



Cadence



Primal



Subwoofer



C

Lip Sync

B. S403001 | Say No to the Show Socks

Call the shots in these classic Smitten fashion no show socks with flat seam toe, welt at ankle to keep sock secure. Non-slip Y-heel ensures a superior fit. Available in a variety of great print combinations, now you too can have socks that rock!

75% nylon/22% polyester/2% spandex/1% rubber* Cadence – (CDNCE) Subwoofer – (SBWFR) Primal – (PRML) One Size: fits sizes 9–11

*Percentages vary slightly depending on color.

C. S403006 | Take It to the Stage

Now you can take your attitude with you in our fun new expression socks. Equipped with a flat toe seam to reduce bulk and raised sock tab for a sure fit. Arch support and half-cushioned pad offer shock absorption and comfort. Strut your stuff on and off the stage in socks that can keep up with you.

97% polyester/2% spandex/1% rubber Lip Sync – (LPSYC) One Size: fits sizes 9–11



D

Removable
wristlet
snaps in
and out!



E

Front

D. Get Loud

Show them your style with Smitten's Get Loud tote. This three-in-one bag offers you the flexibility you need to face anything your day throws at you. Complete with a pink see-through PVC tote encasing a removable printed leopard zip clutch with wristlet. Secure inner snaps ensure everything stays in its place while this fun wild design gives you a chance to stand out.

**100% clear PVC tote with
100% polyurethane handles and bottom
Inner bag 100% poly/nylon**

E. Wrist Taker

Risk it all! The Smitten Wrist Taker is totally worth it! This stylish, fun wristlet features a textured Smitten silver heart and wing logo with contrast pink stitching. Internal mesh pockets offer compact organization while a welt zipper pocket at back offers easy-access storage.

**Black 100% poly/nylon bag with
100% polyester mesh lining**

OUR TOTES

ARE TOTALLY COOL



F

NEW F. Blaze Backpack

Blaze your own trail with a backpack that was made to take you there. This 17"H x 11.5"W x 4.5"D backpack is equipped with adjustable padded shoulder straps, two side exterior mesh water bottle pockets and one reverse coil zipper pocket, top carry handle and flat base for upright support. Interior includes divided patch pocket on padded back and four mesh interior pockets for additional storage. Logo zippers are a subtle reminder that Smitten always has your back no matter where your journey takes you. Rock on in Smitten!

100% polyester

G. Pixie Duffel Bag

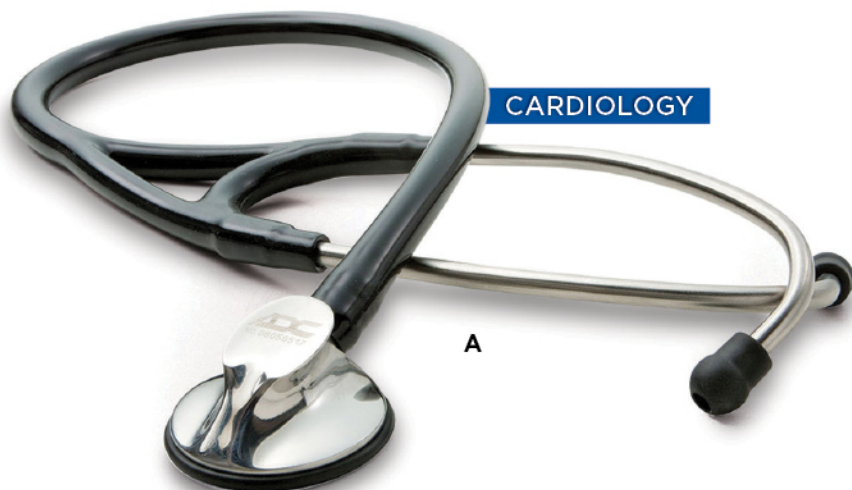
Don't let the name fool you, this bag means serious business. This stylish two-in-one duffel bag is the perfect size for all your essentials, whether you are going to work, the gym or out on the town. It features exterior pockets and multiple interior pockets for plenty of storage. Grosgrain handle and back straps allow for easy carrying while secure zipper ensures your essentials stay where they need to. Convertible base also transforms into a backpack for added functionality. This bag also features our iconic Smitten logo on bag exterior body and handles. It's official, Smitten has the bag that has you covered. We even threw in two pink hair band ties for good measure!

100% nylon



G

STETHOSCOPES



CARDIOLOGY

A

A. 600C | ADSCOPE® 600 Cardiology

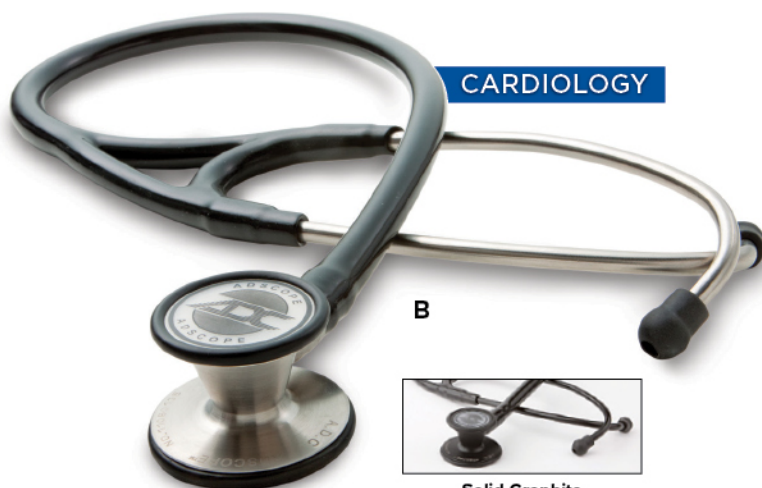
AFD technology for the acoustic response of a traditional bell and diaphragm in a convenient one-sided chestpiece: Make this the ultimate acoustic stethoscope. Sculpted chestpiece precisely CNC machined to exacting tolerances from surgical stainless steel for outstanding performance, rugged durability, and impressive ergonomics. Non-chill diaphragm retaining rim for patient comfort. Cardiology headset with large-bore stainless-steel binaurals fixed at 15° angle (tactical model with black anodized aluminum binaurals). Bi-lumen (dual bore) 19" PVC tubing is soft and flexible and made without phthalates. Adsoft™ Plus snap-on silicone eartips for the ultimate in wearing comfort and acoustic seal. Accessory kit with two spare pairs of Adsoft™ Plus eartips and scope ID tag included. Weighs 715 oz. (203 g), overall length 27". Lifetime warranty covers all parts.

BLACK

B. 601C | ADSCOPE® 601 Convertible Cardiology

Combining AFD technology with a convertible design makes this a versatile Cardiology scope. Chestpiece provides adult diaphragm/bell or adult/pediatric diaphragm configurations. Enhanced acoustic response in both adult and pediatric diaphragms. Chestpiece precisely CNC machined to exacting tolerances from surgical stainless steel for outstanding performance. Extra-deep bell for unsurpassed low-frequency response. Non-chill bell and diaphragm retaining rims for patient comfort. Cardiology headset with large-bore stainless-steel binaurals fixed at 15° angle (tactical model with black anodized aluminum binaurals). Bi-lumen (dual bore) 19" PVC tubing is soft and flexible and made without phthalates. Adsoft™ Plus snap-on silicone eartips for the ultimate in wearing comfort and acoustic seal. Includes accessory kit with bell chestpiece, two spare pairs of Adsoft™ Plus eartips, and scope ID tag. Weighs 7.57 oz. (214.6g) (adult bell) and 8.57 oz. (242.9g) (pediatric diaphragm), overall length 28". Lifetime warranty covers all parts.

BLACK CARIBBEAN GRAPHITE NAVY
WINE

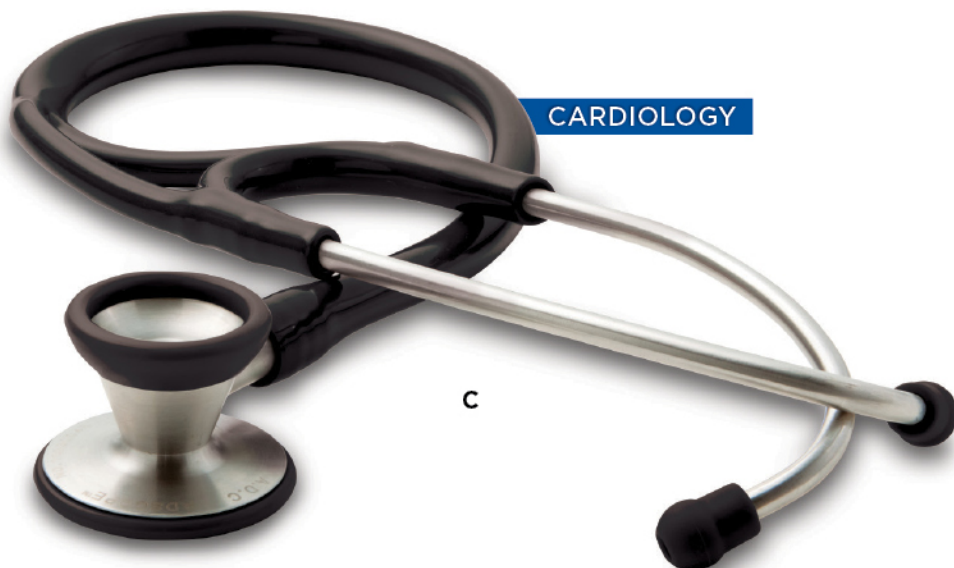


CARDIOLOGY

B



Solid Graphite



CARDIOLOGY

C

C. 602C | ADSCOPE® 602 Cardiology

One of the finest acoustic scopes available, precision crafted performance with rugged durability. Combination chestpiece precisely machined to exacting tolerances from surgical stainless steel. Extra-deep bell for unsurpassed low-frequency response. Ultra-sensitive diaphragm for greater amplification and crisper high-frequency transmission. Cardiology headset with large-bore stainless-steel binaurals fixed at 15° angle to maximize comfort and acoustic seal. Bi-lumen (dual bore) 21" PVC tubing is soft and flexible and has been made without phthalates since 2014. Adsoft™ Plus silicone eartips with new snap-on connection for the ultimate in wearing comfort and acoustic seal. Includes accessory kit with spare diaphragm, two pairs of spare Adsoft™ Plus eartips, and scope ID tag. Weighs 7 oz. (198.4g), overall length 27.6". Lifetime warranty covers all parts.

BLACK

D. 603A | ADSCOPE® 603A Adult Clinician Stethoscope

One of our most popular acoustic scopes outstanding acoustic performance. Combination diaphragm/bell adult chest-piece precisely machined to exacting tolerances from surgical stainless steel for outstanding performance. AFD technology for enhanced acoustic response: light pressure for low, bell-type frequency, firm pressure for high, diaphragm-type frequency. Extra-large bell (1 $\frac{3}{8}$ " diameter) and ultra-sensitive diaphragm (1 $\frac{3}{4}$ " diameter). Non-chill bell and diaphragm retaining rims for patient comfort. Clinician headset with reinforcing yoke molded into the flexible 22" PVC tubing and stainless-steel binaurals fixed at 15° angle for greater comfort (tactical model with aluminum binaurals). Tubing is soft and flexible and has been made without phthalates since 2014. Adsoft™ Plus silicone eartips with new snap-on connection for the ultimate in wearing comfort and acoustic seal. Includes accessory kit with two pairs of spare Adsoft™ Plus eartips and scope ID tag. Weighs 5.8 oz. (164 g), overall length 31". Lifetime warranty covers all parts.

BLACK	BROWN	CARIBBEAN	CEIL
GRAPHITE	LAVENDER	NAVY	ORANGE
PEARL	PINK	PURPLE	RASPBERRY
RED	GOLD PLATED	ROYAL	TURQUOISE
WINE			



Gold Plated

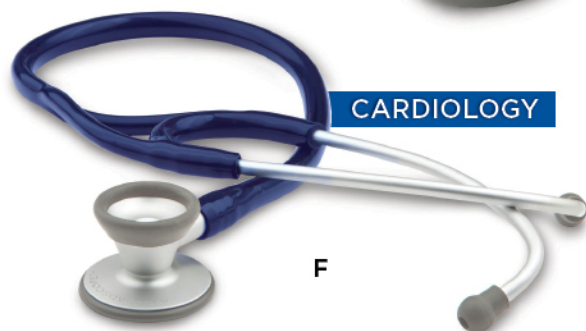


Brown (Copper Plated)

**E. 604P | ADSCOPE® 604 Pediatric**

Legendary acoustics, performance, and exceptional functionality for pediatric care. Combination pediatric chestpiece precisely machined to exacting tolerances from surgical stainless steel for outstanding performance and rugged durability. Extra-large bell (1 $\frac{1}{2}$ " diameter) and ultra-sensitive diaphragm (1 $\frac{1}{8}$ " diameter). Non-chill bell and diaphragm retaining rim for patient comfort. Reinforcing yoke molded into flexible 22" PVC Y-tubing; tubing is soft and flexible and made without phthalates. Stainless-steel binaurals fixed at 15° angle for greater comfort. Adsoft™ Plus silicone eartips with new snap-on connection for the ultimate in wearing comfort and acoustic seal. Accessory kit includes spare diaphragm and two pairs of spare Adsoft™ Plus eartips, and scope ID tag. Weighs 5.3 oz. (149 g), overall length 30.5". Lifetime warranty covers all parts.

BLACK

**F. 606L | ADSCOPE® Lightweight Cardiology**

Cardiology scope performance at a fraction of the weight. Combination chest piece precisely CNC machined to exacting tolerances from ultra-lightweight aluminum alloy. Extra-deep bell for unsurpassed low-frequency response and ultra-sensitive diaphragm for greater amplification and crisper high-frequency transmission. Cardiology headset with large-bore aluminum binaurals fixed at 15° angle to maximize comfort and acoustic seal. Bi-lumen (dual bore) 19" PVC tubing is soft and flexible and made without phthalates since 2014. Adsoft™ Plus silicone eartips with new snap-on connection for the ultimate in wearing comfort and acoustic seal. Includes accessory kit with spare diaphragm, two spare pairs of Adsoft™ Plus eartips, and scope ID tag. Weighs just 4.5 oz. (130 g). Overall length 28". Lifetime warranty covers all parts.

NAVY	ROYAL	WINE
------	-------	------



Solid Graphite

G. 609L | ADSCOPE®-lite 609L Ultra-lite Clinician Stethoscope

An affordably priced stethoscope that combines superior acoustic response with an ultra-lightweight design. Combination diaphragm/bell adult chestpiece precisely machined to exacting tolerances from lightweight aluminum. Extra-large 1 $\frac{3}{8}$ " diameter bell. Highly sensitive 1 $\frac{3}{4}$ " diaphragm. Non-chill bell and diaphragm retaining rim for patient comfort. Clinician headset boasts reinforcing yoke molded into the flexible 22" PVC tubing. Tubing is soft and flexible and made without phthalates since 2014. Lightweight aluminum binaurals in matching satin finish. Adsoft™ Plus silicone eartips with new snap-on connection for the ultimate in wearing comfort and acoustic seal. Includes spare diaphragm and two pairs of spare Adsoft™ Plus eartips. Weighs just 3.5 oz. (100 g). Overall length 31". Five-year warranty covers all parts.

BLACK	CEIL	F. GLACIER	F. LILAC
F. SEAFOAM	GRAPHITE	GREY	LAVENDER
NAVY	PINK	PURPLE	RED
ROYAL	TEAL	TURQUOISE	WINE



CLINICIAN

A



Solid Graphite

A. 615PE | ADCSCOPE® 615 Platinum Edition
With AFD technology and an oversized ovoid chestpiece, this is our finest clinician series stethoscope, the acoustic response of a traditional bell and diaphragm in a convenient one-sided chestpiece. Light pressure for low, bell-type frequency, firm pressure for high, diaphragm-type frequency. Oversized ovoid-shaped chestpiece enhances acoustic performance while improving ergonomics. Sculpted chestpiece machined from zinc alloy plated with an attractive satin stainless finish. Non-chill diaphragm retaining rim for patient comfort. Clinician headset with reinforced yoke molded into the flexible 22" PVC tubing. Tubing is soft and flexible and made without phthalates since 2014. Stainless-steel binaurals fixed at 15° angle for greater comfort (tactical model with aluminum binaurals). Adsoft™ Plus silicone eartips with new snap-on connection for the ultimate in wearing comfort and acoustic seal. Accessory kit with two pairs of spare Adsoft™ Plus eartips and scope ID tag included. Weighs 5.4 oz (152 g). Overall length 30.5". Lifetime warranty covers all parts.

BLACK GRAPHITE ROYAL

B. 618P | ADCSCOPE® Adimals® 618P Pediatric 22" Stethoscope

Our newest pediatric scope boasting AFD technology and a fresh face! Distinctive molded-resin animal face chestpiece optimally sized (1½") for pediatric use. ADC's AFD technology design switches between low, bell-like frequency and high, diaphragm-like frequency simply by altering pressure. Non-chill bell and diaphragm retaining rim for patient comfort. Clinical headset boasts reinforcing yoke molded into the soft, flexible 22" PVC tubing and has been made without phthalates since 2014. Lightweight aluminum binaurals in matching satin finish. Adsoft™ Plus silicone eartips with new snap-on connection for the ultimate in wearing comfort and acoustic seal. Seven interchangeable animal face snap-ons included: Panda, Frog, Koala, Deer, Monkey, Tiger and Bear. Weighs: 3 oz. (85g), overall length 30". Five-year warranty.

PINK SEA FOAM



PEDIATRIC

B



CLINICIAN

C

C. 608CC | ADCSCOPE® 608CC Convertible Clinician Stethoscope
With AFD technology and a convertible design, this is the most versatile of our Clinician scopes. Convertible chestpiece provides adult diaphragm/bell or adult/pediatric diaphragm configurations. Combination diaphragm/bell adult chestpiece precisely machined to exacting tolerances from surgical stainless steel for outstanding performance and rugged durability. ADC's AFD technology provides enhanced acoustic response: light pressure for low, bell-type frequency, firm pressure for high, diaphragm-type frequency. Extra-large bell (1¾" diameter) and ultra-sensitive Clinician headset boasts reinforcing yoke molded into flexible 22" PVC tubing and stainless steel binaurals fixed at 15° angle for greater comfort; tubing is soft, flexible, and made without phthalates. Adsoft™ Plus silicone eartips with new snap-on connections for the ultimate in wearing comfort and acoustic seal. Includes accessory kit with two pairs of spare Adsoft™ Plus eartips and scope ID tag. Weighs 5.8 oz. (164 g), overall length 31". Lifetime warranty covers all parts.

BLACK CARIBBEAN
GREEN *M. PINK
NAVY PURPLE
ROYAL WINE

*Metallic Pink in support of Breast Cancer Awareness (see page 110).

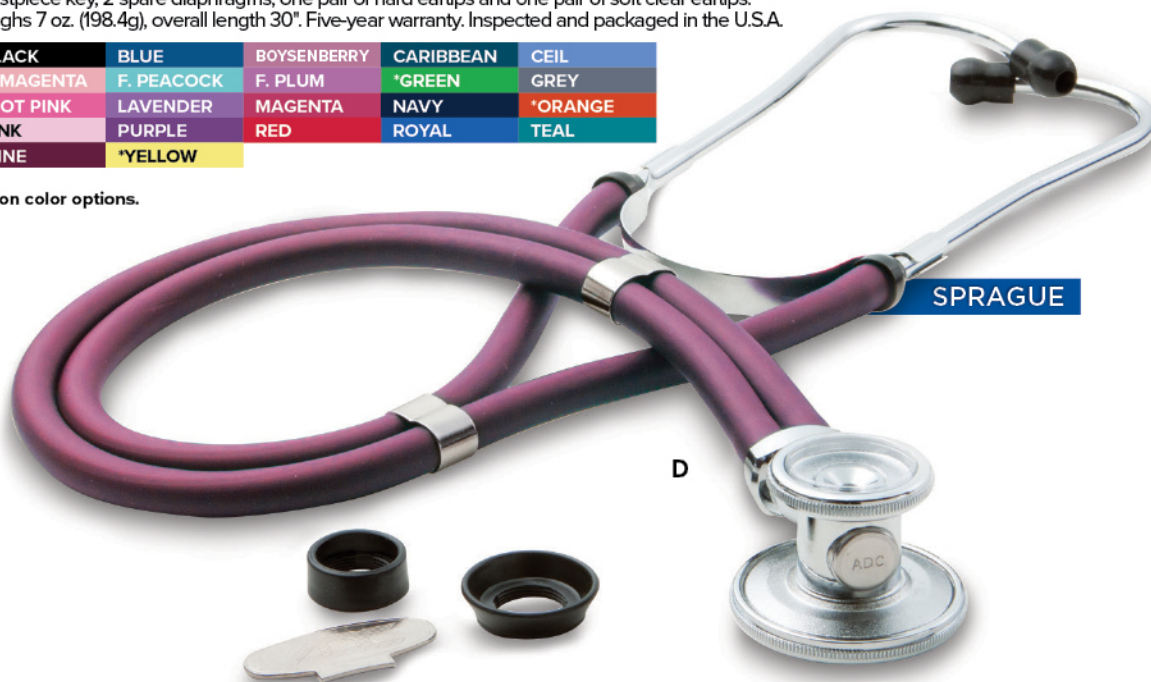
D. 641D | ADC® 641D, 22" Sprague Stethoscope

Why own just a Sprague stethoscope when you can own an ADC® Sprague? Threaded chestpiece drum of chrome-plated zinc permits the use of five interchangeable chestpiece fittings: an adult and pediatric diaphragm, and three bells (1¼", 1", ¾") for complete diagnostic capability on most patients. Double-tube configuration, not made with natural rubber latex. Proprietary valve mechanism eliminates acoustic leakage. Adjustable aluminum binaurals. Convenient 22" tubing length in 31 model options. Includes an accessory pouch containing the bell chestpieces, chestpiece key, 2 spare diaphragms, one pair of hard eartips and one pair of soft clear eartips. Weighs 7 oz. (198.4g), overall length 30". Five-year warranty. Inspected and packaged in the U.S.A.



BLACK	BLUE	BOYSENBERRY	CARIBBEAN	CEIL
F. MAGENTA	F. PEACOCK	F. PLUM	*GREEN	GREY
*HOT PINK	LAVENDER	MAGENTA	NAVY	*ORANGE
PINK	PURPLE	RED	ROYAL	TEAL
WINE	*YELLOW			

*Neon color options.



SPRAGUE

D

DEPENDABILITY

DAY IN AND DAY OUT



SPRAGUE

E

Solid Graphite

E. 646D | ADC® Sprague 646, 22" Tactical

ADC's legendary Sprague with stealth black chrome for a striking appearance. Threaded chestpiece drum of chrome-plated zinc permits the use of five interchangeable chestpiece fittings, an adult and pediatric diaphragm, and three bells (1¼", 1", ¾") for complete diagnostic capability on most patients. Double-tube configuration, not made with natural rubber latex. Proprietary valve mechanism eliminates acoustic leakage. Adjustable aluminum binaurals. Convenient 22" tubing length. Includes accessory pouch containing the bell chestpieces, chestpiece key, 2 spare diaphragms, one pair of hard eartips and one pair of soft clear eartips. Weighs 7 oz. (198.4g), overall length 30". Five-year warranty.

GRAPHITE

F. 647D | ADC® Sprague 647, 22"

Lightweight single tube design for greater comfort and convenience. Threaded chestpiece drum permits the use of five interchangeable chestpiece fittings, an adult and pediatric diaphragm, and three bells (1¼", 1", ¾") for complete diagnostic capability in most patients. Extra-thick Y-tubing, not made with natural rubber latex. Proprietary valve mechanism eliminates acoustic leakage. Adjustable aluminum binaurals. Includes accessory pouch containing the bell chestpieces, chestpiece key, 2 spare diaphragms, one pair of hard eartips and one pair of soft clear eartips. Weighs 5.7 oz. (161.5g), overall length 31 ½".

BLACK	HOT PINK
NAVY	PURPLE
ROYAL	



SPRAGUE

F

NEW A. 658E | ADSCOPE® 658**Electronic stethoscope**

With ADC's Adscope® 658 Electronic stethoscope, you'll hear sounds you may have missed with a traditional acoustic instrument. The contact-activated microphone filters higher-frequency background noises that typically interfere with auscultation, then amplifies heart and lung sounds up to 18X. Amplifies sounds up to 18X (24dB). Noise-filtering contact microphone eliminates background interference. Eight-step volume control with last-setting memory. Cardiology headset with bilumen tubing and stainless-steel binaurals. Multifunction button controls the frequency mode (bell or diaphragm) and the volume (eight levels). Backlit LCD display powers down automatically if not in use. Rechargeable Li-ion battery, twenty hours of continuous use on a full charge. High-impact thermoplastic housing withstands drops, bumps, and other contact. Measures 30 inches and weighs 175 grams. Contact microphone measures 7 mm in diameter, suitable for use on any size patient. Includes three pairs of Adsoft™ Plus snap-on silicone eartips, two small and one large. Micro USB cable and scope ID tag also included. Two-year warranty on electronics (chestpiece), lifetime warranty on headset.

BLACK	CARIBBEAN	CEIL
GREEN	GREY	*M. PINK
NAVY	ORCHID	RASPBERRY
WINE		

**NEW****A****ELECTRONIC**

STETHOSCOPES

B. 655V | ADSCOPE® VistaScope

Diaphragm-only type chestpiece fabricated from lightweight acrylic provides up to twice the amplification of conventional acoustic scopes. Lightweight and neither bulky nor awkward to use. Clinical headset boasts reinforcing yoked molded into the flexible 22" PVC tubing and stainless-steel binaurals fixed at 15° angle for greater comfort. Tubing is soft and flexible and made without phthalates since 2014. Adsoft™ Plus silicone eartips with new snap-on connection for the ultimate in wearing comfort and acoustic seal. Includes eight printed designer diaphragms for personalizing scope and scope ID tag. Weighs 5 oz. (142 g). Overall length 31.5". Lifetime warranty covers all parts.

BLACK**CLINICIAN****B****C****INSTITUTIONAL****C. 660D | PROSCOPE 660 Nurse Scope**

The best-selling reusable Proscope on the market. Diaphragm-only chestpiece constructed of lightweight aluminum. Non-chill, nurse-style chestpiece (1¾" diameter), ideally suited for blood pressure measurement. Proprietary diaphragm enhances acoustic response by 50% over traditional designs. Adjustable aluminum binaurals with PVC eartips. Flexible 21" PVC tubing is made without phthalates. Spare pair of black mushroom eartips included. Choice of 20 tubing colors. Weighs just 2.41 oz. (68.4 g). Overall length 31.5" (80cm). One-year warranty.

BLACK**D****INSTITUTIONAL****D. 670D | PROSCOPE 670 Dualhead**

Combines lightweight construction with truly affordable pricing. Combination diaphragm/bell chestpiece for wide frequency response made of lightweight aluminum construction. Non-chill bell and diaphragm rim for patient comfort. Diaphragm diameter 1¾", bell diameter ¾". Proprietary diaphragm enhances acoustic response by 50% over traditional designs. Adjustable aluminum binaurals with PVC eartips. Flexible 21" PVC tubing is made without phthalates. Spare pair of black mushroom eartips included. Choice of 20 tubing colors. Weighs 3 oz. (85.6 g). Overall length 32.25" (81 cm). One-year warranty.

BLACK**BLUE****NAVY****PINK**

*ADC provides direct financial support through select cause-branded products to the American Cancer Society and the EIs for the Autism Foundation. The line of awareness-themed products includes several of the stethoscopes and blood pressure cuffs shown in this catalog. ADC donates 10% of its sales price from these items to the corresponding charities.

NEW E. 720 | DIAGNOSTIX Bariatric Sphyg

Precision crafted 300mmHg Japanese engineered manometer with classic black baked enamel finish exceeds industry performance standards. Extended scaleplate graduation marks reduce parallax for easier viewing from virtually any angle. Bariatric Adcuff™ nylon cuff with ADC's proprietary Size Guide™ marking system prevents mis-cuffing. Custom-sized inflation bladder with one 50cm and one 25cm tube. Curved design provides a better fit on conically shaped bariatric arms. Fits limbs with a circumference of 44cm to 66cm. Adflow™ oversized bulb and valve (#872LN) with filter screen protection allows for faster inflation of the larger cuff. Adflow™ filter screen check and deflation valve reduce dust build-up. Adflow™ chrome-plated brass air release valve for precise deflation control. Over-sized leatherette carrying case with durable nylon zipper. Not made with natural rubber latex. Assembled, inspected, and packaged in the U.S.A. from foreign components. Meets or exceeds ANSI/AAMI/ISO 81060-1.

WINE



ENGINEERED

FOR PERFORMANCE

NEW

F

NEW F. 728609 | PRO'S Combo V 728/609 Kit

Combines ADC's Diagnostix 720 pocket aneroid with a lightweight Adscope® 609 Clinician scope and oversized, color-coordinated carry case. Free Metalite II reusable penlight included with each kit. Adcuff™ nylon cuff with ADC's proprietary Size Guide™ marking system prevents mis-cuffing. Premium aneroid manometer exceeds ANSI/AAMI/ISO 81060-1 specifications for accuracy. Lifetime calibration warranty on manometer. Three-year warranty on Adcuff™ inflation system. Five-year warranty on Adscope® 609. Assembled, inspected, and packaged in the U.S.A. from foreign components. Not made with natural rubber latex. Shipped in our premium Pro's Combo+ gift-box packaging.

BLACK

PURPLE

ROYAL

NEW

G

NEW G. 778603 | PRO'S Combo III 778/603 Kit

Combines ADC's Diagnostix 700 pocket aneroid with a lightweight Adscope® 603 Clinician scope and oversized, color-coordinated carry case. Free Metalite II reusable penlight included with each kit. Adcuff™ nylon cuff with ADC's proprietary Size Guide™ marking system prevents mis-cuffing. Chrome-plated, precision-crafted 300mmHg manometer exceeds ANSI/AAMI/ISO 81060-1 specifications for accuracy. Lifetime calibration warranty on manometer. Lifetime warranty on Adscope® 603. Three-year warranty on Adcuff™ inflation system. Assembled, inspected, and packaged in the U.S.A. from foreign components. Not made with natural rubber latex. Shipped in our premium Pro's Combo+ gift-box packaging.

BLACK

PURPLE

ROYAL

A. 776641 | ADSCOPE® Pro's Combo 776/641 Kit

An economical aneroid for today's cost-conscious healthcare market, the 776-641BKZ features an ADC Prosphyg. Black enamel 300 mmHg manometer exceeds industry standard. Navy blue nylon cuff with range markings to facilitate selection of correct cuff size and gauge holder. Chrome-plated deflation valve. An Adscope® 641 Sprague. Threaded chestpiece drum of chrome-plated zinc permits the use of five interchangeable chestpiece fittings: adult and pediatric diaphragms and three bells (1¼", 1", ¾"). Double-tube configuration and proprietary valve mechanism that eliminates acoustic leakage. Adjustable aluminium binaurals and convenient 22" tubing length. Accessory pouch containing the bell chestpieces, chestpiece key, 2 spare diaphragms, one pair of hard eartips and one pair of soft clear eartips. Includes black leatherette zippered carrying case and operating instructions.

NAVY



DESIGNED

FOR ACCURACY

B. 775P | PROSPHYG Aneroid Sphyg

An economical aneroid for today's cost-conscious healthcare market. Black enamel 300 mmHg manometer, exceeds industry standard. Navy blue nylon cuff with range markings to facilitate selection of correct cuff size and gauge holder. Inflation bladder and bulb not made with natural rubber latex. Chrome-plated deflation valve. Includes leatherette zippered carrying case and operating instructions. Assembled, inspected, and packaged in the U.S.A. from foreign components. Meets or exceeds ANSI/AAMI/ISO 81060-1.

NAVY

**C. 776Z | ANEROID SPHYG Adult – ADC**

The 776Z features: Black enamel 300 mmHg manometer exceeds industry standard. Navy blue nylon cuff with range markings to facilitate selection of correct cuff size and gauge holder. Inflation bladder and bulb not made with natural rubber latex. Chrome-plated deflation valve. Includes leatherette zippered carrying case and operating instructions. Inspected and packaged in the U.S.A. from foreign components.

NAVY

**D. 76864111 | ADSCOPE® Pro's Combo 768/641 Kit**

Our most popular professional kit that combines our best-selling ADC Prosphyg 768 with an Adscope® Sprague 641 and includes a deluxe carry case. Contemporary black enamel 300 mmHg manometer. Adcuff™ calibrated nylon cuff with ADC's proprietary Size Guide™ marking system prevents mis-cuffing. Chrome-plated deflation valve. Complete aneroid, matching case, and color-matched Sprague stethoscope. Extra-large, color-matched, dual pocket carry case, measures 9" x 5" x 2". Not made with natural rubber latex. Meets or exceeds ANSI/AAMI/ISO 81060-1.

**E. 77860311 | ADSCOPE® Pro's Combo 778/603 Kit**

A combination of our finest pocket aneroid and our most popular Adscope® 603 series clinician stethoscope. Chrome-plated with luminescent dial provides day-in, day-out dependability. Adcuff™ nylon cuff with ADC's proprietary Size Guide™ marking system prevents miscuffing. Color-coordinated matching professional stethoscope. Extra-large, color-matched, dual-pocket carry case. Not made with natural rubber latex. Ideal for nurses, PAs, and EMTs. Lifetime quality performance guarantee on Adscope® 603 covers all parts. Meets or exceeds ANSI/AAMI/ISO 81060-1.

BLACK *BCA PINK PURPLE



*Hot Pink in support of Breast Cancer Awareness (see page 110). *Asst: (Puzzle Pieces) in support of the Autism Foundation. *BCA Pink in support of Breast Cancer Awareness.

F. 700D | DIAGNOSTIX Aneroid Sphyg

Our finest pocket aneroid, the 700 is the instrument of choice for the discriminating professional. Chrome-plated precision crafted 300 mmHg manometer. Luminescent dial features bold numerals and extended graduation marks for easy reading in all light conditions and from virtually any angle. Adcuff™ nylon cuff with ADC's proprietary Size Guide™ marking system prevents mis-cuffing. Adflow™ filter screen check and deflation valves reduce dust build-up. Adflow™ chrome-plated brass air release valve with microthreads for precise deflation control. Leatherette carrying case with durable nylon zipper. Not made with natural rubber latex. Meets or exceeds ANSI/AAMI/ISO 81060-1.

BLACK
NAVY

*HOT PINK
PURPLE

**F****H****H. 6021N | ADVANTAGE Automatic Digital BP**

Our best-selling fully automatic upper arm digital home blood pressure monitor. Measures systolic, diastolic pressure, and pulse. British Hypertension Society (BHS) AA rating ensures unrivaled accuracy. Smart Logic Technology determines ideal inflation level. Irregular Heartbeat detector. Recalls last 99 readings with date and time stamp for two users. Self-adjusting extended range latex-free D-Bar cuff fits arm ranges from 8.7" to 16.5" (22 cm to 42 cm). Auto-off. Not made with natural rubber latex. Deluxe Storage case. Optional AC adapter (sold separately). Meets or exceeds EN 1060-1 and EN 1060-3. Five-year warranty.

**G. 6015N | ADVANTAGE****Basic Wrist Digital BP**

With Smart Logic Technology and an advanced memory, our Advantage 6015N is our most popular wrist digital home blood pressure monitor. The 6015N measures systolic, diastolic pressure, and pulse. British Hypertension Society (BHS) AA rating ensures unrivaled accuracy. Smart Logic Technology determines ideal inflation level. Recalls last 99 readings for two users. Wrist cuff fits 5.3" to 7.7" wrists. Auto off. Not made with natural rubber latex. 2 AAA batteries and compact storage case included. Meets or exceeds EN 1060-1 and EN 1060-3. Five-year warranty.

**I****I. 760P | PROSPHYG Aneroid Sphyg**

Our most popular aneroid, the 760 is the model of choice for demanding institutions. Contemporary black enamel 300 mmHg manometer provides day-in, day-out dependability, and exceeds industry standards. Adcuff™ nylon cuff with ADC's proprietary Size Guide™ marking system, prevents mis-cuffing. Chrome-plated brass air release valve. Leatherette carrying case with durable nylon zipper. Not made with natural rubber latex. Meets or exceeds ANSI/AAMI/ISO 81060-1.

BLACK	GREEN	*HOT PINK	MAGENTA
NAVY	PURPLE	RED	ROYAL
TEAL	WINE		

J. 2200F | ADVANTAGE Fingertip Pulse Oximeter

A portable fingertip pulse oximeter ideally suited for home, sport, or aviation use. Reads SPO₂ and Pulse Rate. Accuracy: SPO₂ ±2% / HR ±5%BPM. 2 changeable display modes. Bright red LED display. Fits fingers with a thickness of 8mm-20mm (0.31"-0.79"). Carry lanyard. Instruction booklet. One-year limited warranty.

**J****K. 2100D | DIAGNOSTIX Fingertip Pulse Oximeter**

A portable, feature rich pulse oximeter that provides spot readings of SpO₂ and heart rate for the busy healthcare professional. Measures 2½" x 1½" x 1½", weighs 1.8 oz.

**K**

*Hot Pink in support of Breast Cancer Awareness (see page 110).

A. 320S | MEDICUT Shears

ADC's Medicut Shears are the world's best-selling brand of medical grade utility shears. Traditional 7¼" length for maximum leverage and strength. Stainless steel safety bandage tip. Razor sharp, super-hardened surgical stainless steel blades with one serrated edge to cut through the toughest materials. Blades tempered to a Rockwell hardness of C56 for unsurpassed durability. Contoured polypropylene handles with large ring provide maximum control and comfort. Extra-large rivet with a rated strength of 88kg assures rugged durability. Fully autoclavable to 143°C (290°F). Inspected and packaged in the U.S.A. Two-year quality performance guarantee. CE marking.

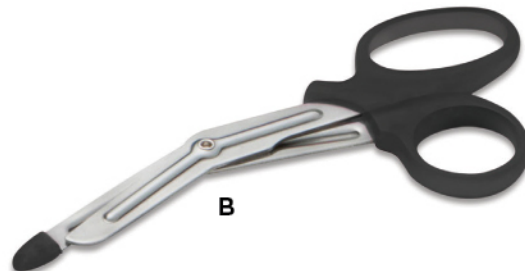
BLACK ORANGE PINK PURPLE RED



B. 321S | MINI MEDICUT Shears

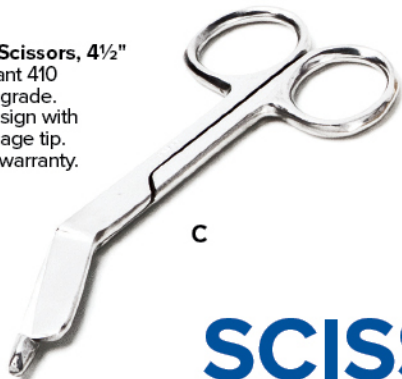
Designed for nursing, ADC's Mini Medicut Shears are a scaled down version of our best-selling shears. Smaller 5½" length is ideal for cutting bandages, tape, and clothing. Polypropylene safety bandage tip color coordinated to the handle. Razor sharp, super-hardened surgical stainless steel blades with one serrated edge to cut through the toughest materials. Blades tempered to a Rockwell hardness of C56 for unsurpassed durability. Contoured polypropylene handles with large ring provide maximum control and comfort. Extra-large rivet with a rated strength of 88kg assures rugged durability. Fully autoclavable to 143°C (290°F). Inspected and packaged in the U.S.A. Two-year quality performance guarantee. CE marking.

BLACK BLUE F. KIWI F. MAGENTA F. PEACOCK
F. PLUM GREEN MAGENTA *PINK PURPLE
RED ROYAL TEAL



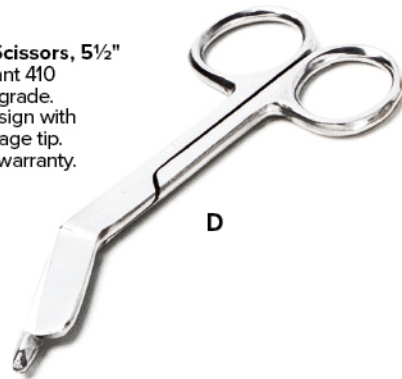
C. 300Q | Lister Bandage Scissors, 4½"

Forged from corrosion-resistant 410 surgical stainless steel. Floor grade. Traditional Lister bandage design with off set blade and safety bandage tip. Autoclavable. 4½". One-year warranty.



D. 301Q | Lister Bandage Scissors, 5½"

Forged from corrosion-resistant 410 surgical stainless steel. Floor grade. Traditional Lister bandage design with off set blade and safety bandage tip. Autoclavable. 5½". One-year warranty.



SCISSORS

E. 310Q |

Kelly Forceps, Straight, 5½"
Forged from corrosion-resistant 410 surgical stainless steel. Floor grade. Traditional Kelly hemostat design with serrated jaws and locking handle. Autoclavable. 5½", straight. One-year warranty.



F. 311Q |

Kelly Forceps, Curved, 5½"
Forged from corrosion-resistant 410 surgical stainless steel. Floor grade. Traditional Kelly hemostat design with serrated jaws and locking handle. Autoclavable. 5½", curved. One-year warranty.



G. 314Q |

Halstead Mosquito Forceps, Straight, 5"
Forged from corrosion-resistant 410 surgical stainless steel. Floor grade. Traditional Halstead Mosquito hemostat design with serrated jaws and locking handle design. Autoclavable. 5", straight. One-year warranty.



H. 3006Q | Lister Bandage Scissors, with clip, 4½"

Forged from corrosion-resistant 410 surgical stainless steel. Floor grade. Traditional Lister bandage design with off set blade and safety bandage tip. Convenient pocket clip. Autoclavable. 4½". One-year warranty.



I. 3007Q | Lister Bandage Scissors, with clip, 5½"

Forged from corrosion-resistant 410 surgical stainless steel. Floor grade. Traditional Lister bandage design with off set blade and safety bandage tip. Convenient pocket clip. Autoclavable. 5½". One-year warranty.



J. 3101Q | Crile Forceps, straight 5½"

Forged from corrosion-resistant 410 surgical stainless steel. Floor grade. Traditional Crile hemostat design with serrated jaws and locking handle. Autoclavable. 5½", straight. One-year warranty.



K. 415T | ADTEMP IV Digital Thermometer

Quick-read digital stick thermometer. The Adtemp 415 features: 15-second oral, 10-second rectal temperature measurement. Large LCD for easy reading. Range 90°F–109.9°F $\pm 2^\circ\text{F}$ or 32°C–43.2°C $\pm 1^\circ\text{C}$ depending upon scale selection. Replaceable 1.55v (LR41) type battery provides up to 1,500 measurements. Includes 5 probe sheaths and a clear plastic scabbard storage case. Each in box, 12/carton, 144/case. Meets the accuracy requirements for intermittent thermometers under ASTM E1112.



K

L. 418T | ADTEMP V Fast Read Flex tip Digital Thermometer

Our most feature-rich digital stick thermometer with ultra-fast response time. 8 second measurement using proprietary predictive technology. Range 90°F–109.9°F $\pm 2^\circ\text{F}$ or 32°C–43.2°C $\pm 1^\circ\text{C}$ depending upon scale selection. Replaceable 1.55v (LR41) type battery provides up to 1,500 measurements. Includes integral scabbard type carry case and 5 probe sheaths. Contemporary Euro design. Meets the accuracy requirements for intermittent thermometers under ASTM E1112.



L

CRAFTSMANSHIP

YOU CAN TRUST

M. 427T | ADTEMP Temple Touch Thermometer

Ultra-fast response and cost effective design makes the Adtemp 427 ideal for pediatric and institutional use. Non-invasive forehead temperature measurement using patented conductive technology delivers clinically accurate readings in about 6 seconds. Reduces the risk of cross contamination and avoids the need for costly probe covers. Ideal for the hospital, clinic, or physician office. Auto-off function conserves battery life. Audible tone when measurement is complete. Last reading memory. Dual Scale ($^\circ\text{F}/^\circ\text{C}$). Large display. (Minimum 1000 full duty cycles over 24 month period). Temp range 95°F to 107.6°F $\pm .2^\circ\text{F}$ (35°C to 42°C $\pm .1^\circ\text{C}$). Compact design measures just 4.7" x 1.17" x 1" (12.0 cm x 3.0 cm x 2.4 cm). Weighs 1.3 oz. (37g) including batteries. Meets the accuracy requirements for intermittent thermometers under ASTM E1112.



M

N. 429T | ADTEMP Non-Contact Thermometer

The Adtemp 429 Non-Contact Thermometer features infrared sensor, simplifies temperature measurement, ideal for screening. Measures in about 1 second without patient contact, eliminating the concern of cross contamination or costly probe covers. Dual mode – body and object. Large backlit LCD display is easy to read. Wide temp range, and Fahrenheit/Celsius switchable. 30-reading memory. Auto-off function after 30 seconds conserves battery life. Audible beep when measurement is complete, night mode mutes volume. Uses 2 AAA batteries (included). 2-year warranty. Measurement accuracy (Laboratory) – Body Mode: 50°F–122°F (10°C–50°C), $\pm 0.5^\circ\text{F}$, 71.6°F–104°F ($\pm 0.3^\circ\text{C}$, 22°C–40°C). Object Mode: 32°F–212°F (0°C–100°C), $<68^\circ\text{F} \pm 1^\circ\text{F}$, $>68^\circ\text{F} \pm 5^\circ$ ($<20^\circ\text{C} \pm 1^\circ\text{C}$, $>20^\circ\text{C} \pm 5^\circ$).



N

O. 5110N | DIAGNOSTIX Pocket Oto/Ophthalmoscope Set, 2.5V

Full featured 2.5V Pocket Diagnostic Set that sacrifices nothing but the size. Ootoscope features: Fiber optics for cool, obstruction-free light transmission; your choice of 2.5V Xenon or AdLED lamp for true tissue color; a wide-angle swivel 2.5x viewing lens to permit instrumentation; and an insufflator port (fitting and insufflator sold separately) for pneumatic otoscopy. Ophthalmoscope features: 5 aperture selections (small spot, large spot, semicircle, fixed and red-free filter); 19 viewing lenses from -20 to +20 diopters for better resolution; illuminated magnified lens dial; rubber brow rest; your choice of 2.5V Xenon or AdLED lamp for true tissue color. Each instrument includes: AA battery handle with on/off power switch integrated into pocket clip. Set includes: Tube containing 5 each Welch Allyn 2.75 mm and 4.25 mm disposable specula; 1 spare Xenon lamp for each instrument; choice of hard or soft carry/storage case. 2-year instrument warranty, lifetime warranty on optics and AdLED lamp.



O



A. 218C | Hip Clip, Stethoscope Clip

Lightweight plastic design. Easy waistband clip. Reduces neck strain and chest tenderness. Frees use of hands. Cleans easily.



B. 1024B | Medical Bag

A heavy duty, padded multi-compartment medical nylon bag to protect your most valuable medical equipment. Multi-pocketed, heavy-duty nylon medical bag with 8mm foam padded bottom. Double zipper opening for main compartment. Two interior zippered pockets 6½" x 4". Adjustable, removable webbed shoulder strap and two contoured handles for easy carrying. 11 interior gusseted pockets of varying sizes. Back file folder pocket 13¾" x 7". Front zippered pocket measures 7½" x 9½" x 2". Measures 14" x 9½" x 6" (closed). Weighs 1 lb. One year warranty. Note: Items shown in photo are not included.

BLACK

NAVY

C. 697D | Premium Stethoscope ID Tag

Our premium ID tag made from durable polypropylene construction. Locks onto the tubing of all ADC brand, and virtually any other brand of stethoscopes and blood pressure instruments. Back of tag has room for personalization. ID tag is supplied with most Adscope® stethoscopes.



C

D. 698D | Stethoscope ID Tag

Plastic ID tag that helps protect your diagnostic investment. Durable polypropylene construction. Locks onto the tubing of all ADC brand, and virtually any other brand of stethoscopes and blood pressure instruments. Back of tag has room for personalization. ID tag is supplied with most Adscope® stethoscopes.



D

BLACK

ROYAL

WHITE

PROTECTION

FOR YOUR VALUABLE EQUIPMENT



E

E. 216T | Pocket Pal II

An indispensable uniform accessory that combines fashion with function. Washable 420D white nylon pocket organizer sewn with nylon thread. 5 slide-in and one covered pocket in front, one full-width slide-in pocket in rear. Handy key ring. Hook & Loop snap closures in choice of colors. Measures 6¼" x 4¾" x ¼", weighs 1 oz.

BLACK

NAVY

WHITE



F

F. 116T | Pocket Pal II Kit

Our Pocket Pal organizer is loaded with 3 of nursing's most indispensable instruments. Pocket Pal II Kit features a washable 420D white nylon pocket organizer sewn with nylon thread. 5 slide-in and one covered pocket in front, one full-width slide-in pocket in rear. Handy key ring. Hook & Loop snap closures in choice of colors. Measures 6¼" x 4¾" x ¼", weighs 1 oz. Includes 5½" Lister Bandage Scissor. 3-color pen, Adlite Disposable Penlight.

BLACK

NAVY

PURPLE



G

G. 117K | Pocket Pal III Kit

An upgrade to the Pocket Pal kit that includes a color matched Adlite penlight and our legendary MiniMedicut shears. The Pocket Pal III Kit features washable 420D white nylon pocket organizer sewn with nylon thread. 5 slide-in and one covered pocket in front, one full-width slide-in pocket in rear. Handy key ring. Hook & Loop snap closures in a choice of vibrant colors. Measures 6¼" x 4¾" x ¼", weighs 1 oz. Includes MiniMedicut Shear, 3-color pen, Adlite Plus penlight.

BLACK

PURPLE

TEAL



H. 116C | Nurse Combo 116 Pocket Pal II/641 Scope
Our best selling Pocket Pal II kit with our legendary Adscope® Sprague stethoscope. Includes Pocket Pal II™ (216), 5½" Lister Bandage Scissor (301), 3-color pen (392), Adlite™ Disposable Penlight (356W), Adscope™ 641 Sprague stethoscope with 22" tubing color coordinated to the Hook & Loop tags, and a 9-piece accessory kit. Assembled, inspected, and packaged in the U.S.A.

BLACK PURPLE ROYAL



I. 395Q | EKG Caliper
Designed to measure EKG waveforms. Hardened steel arms and points for accurate measurement of tracing intervals. Point protector has built-in 40mm metric scale. Measures 4¾".



J. 219T | S.T.H.1 Stethoscope Tape Holder
A unique tape holder designed to keep medical tape secure to any stethoscope and ready for use. Made in the U.S.A. of a solid ABS plastic material to maintain its strength and flexibility, yet is extremely lightweight (under 0.3 oz.). Acts as a perfect counter-weight when a roll of tape is attached, to help balance your scope around your neck. Has a slotted screw enabling it to securely fit on all standard sized stethoscopes. Attaching or removing a roll of 1" medical tape is quick and easy with a single click. Available in multiple colors to keep you coordinated with your uniform. Fully warranted for one year.

BLACK WHITE



K. 4056S | ADSAFE Plus CPR Face Shield with Keychain
The ultra-compact Adsafe Plus offers maximum protection during CPR. User-friendly design protects the rescuer and helps eliminate hesitation when performing CPR. Semi-transparent face shield allows visualization of patient's lips, mouth, and nose while protecting rescuer. Printed instructions and orientation guides right on the shield help ensure correct use, even by those with little or no CPR experience. Bite block airway tunnel with extended mouthpiece assists the rescuer in maintaining an open airway when performing the head tilt, chin lift maneuver. One-way valve with 3M Filtrete filter protects the rescuer from victim's fluids. Single use. Not made with natural rubber latex. Measures 6" L x 10" W when open, just 2" x 1½" x ⅞" when in its case. Includes compact hard case with handy key ring clasp.

BLACK ORANGE ROYAL

PENLIGHTS



A. 354Q | ADLITE II Reusable Penlight
Penlight, White Reusable version of our popular Adlite series of diagnostic penlights. Plastic housing for lightweight comfort. Pocket clip activated. Measures 5" long by 1/2" diameter.

B. 352P | METALITE Reusable Penlight
Penlight, White with Pupil Gauge. Our reusable diagnostic penlight with aluminum body and plunger power switch. Aluminum housing. Locking push-toggle activated. Measures 5 1/4" long by 1/2" diameter.

C. 352Q | METALITE Reusable Penlight
Penlight, Silver Reusable diagnostic penlight with aluminum body and plunger power switch. Aluminum housing. Locking push-toggle activated. Measures 5 1/4" long by 1/2" diameter.

D. 353P | METALITE II Penlight
Penlight, Red. The newest addition to our Metalite brand of reusable diagnostic penlights. Aluminum housing for lightweight comfort. Push button activated. Pocket clip for convenience. Measures 5" long by 1/2" diameter.

BLACK	RED	ROYAL
SILVER		

E. 351P | ADLITE Disposable Penlight
Disposable Penlight Features: Sealed concentric beam. Activated by depressing pocket clip. Pupil gauge. Measures 5" long, 1/2" diameter. Sold in 6 pack.



F. 358A | ADLITE Disposable Penlight, 22/Cylinder
Disposable. Penlight, 22/ Cylinder Sealed concentric beam, disposable diagnostic penlight. Measures 5" long by 1/2" diameter. Display cylinder of 22 assorted colors.



HAMMERS



G

G. 3691Q | Buck Hammer

A versatile neurological hammer that combines 4 instruments in one. Chrome-plated handle with 2-sided synthetic rubber head. Handle conceals screw-in brush. Needle contained within the head. Overall length 7½". Not made with natural rubber latex.



H

H. 3693H | Black Taylor Hammer

The most popular of our reflex hammer designs. Chrome handle with triangular synthetic rubber head in choice of 5 colors. Overall length 7½". Not made with natural rubber latex.

BLACK
ROYAL

GRAPHITE

GREEN

RED

QUALITY

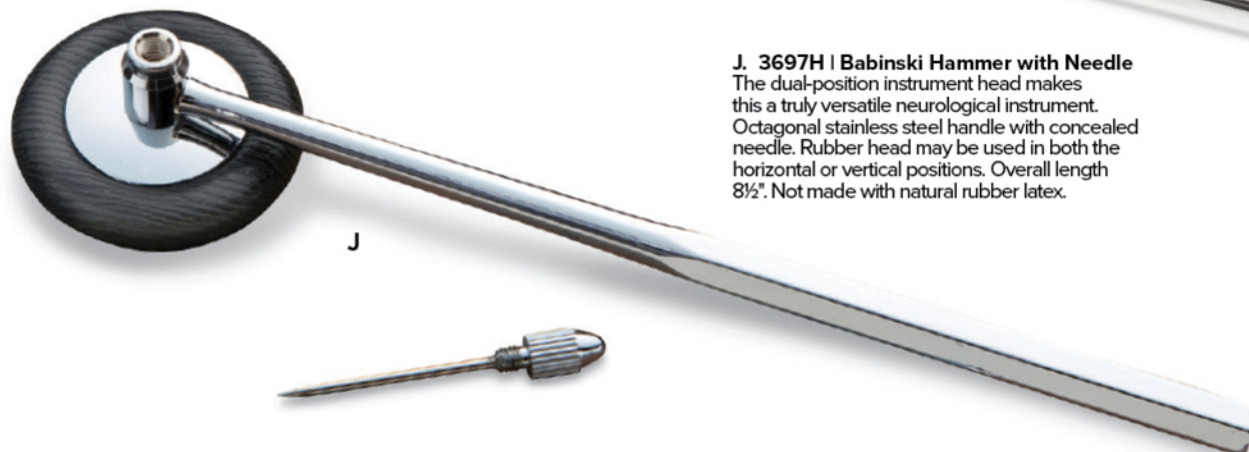
THAT SETS THE STANDARD



I

I. 3698H | Babinski Hammer

The ADC Babinski Hammer features a stainless steel telescoping handle. Rubber head may be used in both the horizontal or vertical positions. Tapered handle base allows for plantar reflex testing. Not made with natural rubber latex. Overall length 15" open, 6¾" closed.



J

J. 3697H | Babinski Hammer with Needle

The dual-position instrument head makes this a truly versatile neurological instrument. Octagonal stainless steel handle with concealed needle. Rubber head may be used in both the horizontal or vertical positions. Overall length 8½". Not made with natural rubber latex.

FIT GUIDE



CLASSIC

MODERN

CONTEMPORARY

FIND THE FIT FOR YOU.

Whether you prefer Landau, Smitten or Urbane, our new universal fit guide and easy-to-use fit classifications will make it simple to pick the fit you want, so you can focus on what really matters. Find out more on page 4-5.

Landau



urbane

MODERN

CLASSIC

CONTEMPORARY

