

URBANE

urbane™



urbaneTM 
uniquely u

Look What's New for U

Urbane now offers great-looking
styles for men and women.

NEW URBANE ULTIMATE CONTEMPORARY FIT

Urbane Ultimate's new contemporary fit was designed to make you look your best, complementing your shape without sacrificing style, comfort or function.

NEW A. 9063 | "Chelsea" Soft V-Neck Tunic

Make a statement in this great-looking top with soft curved neckline and newly designed tailored waistline. Bust darts provide shaping and double top-load pockets give you plenty of storage options. Other features include left bungee loop, side vents for free-flowing movement and back darts that help create a flattering shape.

54% rayon/44% poly/2% spandex

Sizes: XS-5XL*

Medium length: 25 $\frac{1}{8}$ "



A

CONTEMPORARY



NEW B. 9330 | "Michelle" Yoga Flare Leg Pant

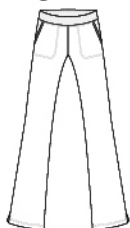
This yoga-inspired knit waistband pant with modern rise and flare-leg styling features our new tailored hip and thigh design for a clean silhouette that complements your figure. Side vents offer a full range of movement and back darts provide additional shaping. Roomy hip pockets for storage.

54% rayon/44% polyester/2% spandex

Regular: XS–5XL (31" inseam)*

Petite: PXS–P3X (29" inseam)*

Tall: TXS–TXL (33½" inseam)*



CONTEMPORARY

B



CONTEMPORARY

C



NEW C. 9062 | "Leah" Empire Notch Neck Tunic

A new tailored waistline makes this top a standout. It features a flattering notch neck, empire band and bust darts for superior shaping. Side vents and adjustable back tabs provide easy-breezy movement and two top-load pockets provide all the storage you want.

54% rayon/44% poly/2% spandex

Sizes: XS–5XL*

Medium length: 27½"



CONTEMPORARY

D



NEW D. 9329 | "Taylor" Straight Leg Pant

Back elastic-waist straight modern rise and straight-leg pants featuring drawstring waist, side vents for flexibility and our newly designed tailored hip and thigh that make for a better, more flattering fit without limiting movement. Welt cargo pocket hip and back pockets also provide plenty of much needed storage.

54% rayon/44% polyester/2% spandex

Regular: XS–5XL (31" inseam)*

Petite: PXS–P3X (29" inseam)*

Tall: TXS–TXL (33½" inseam)*



FITS YOUR EVERY MOVE

A. 9577 | "Sophie" Crossover Tunic

The style you love in a softer, more flexible fabric. Crossover tunic with defined waistline. Six pockets and an accessory loop add function. Tagless for even greater comfort.

54% rayon/44% polyester/2% spandex

Sizes: XS-5XL*

Medium length: 26 1/2"



A

MODERN



MODERN

B

B. 9300 | "Bailey" Cargo Pant

Natural fit, straight leg silhouette features flat front waistband with inside drawstring and back elastic. Relaxed through the hip, seat and thigh. Front scoop pockets with stitched detail and logo rivet at side seams. The right side has a cargo pocket.

54% rayon/44% polyester/2% spandex

Regular: XS-5XL (31½" inseam)*

Petite: PXS-P3X (29" inseam)*

Tall: TXS-TXL (33½" inseam)*



MODERN

C

C. 9306 | "Alexis" Comfort Elastic Waist Pant

Looking professional has never been so comfy. Soft modern elasticized waist with hidden drawstring for a customized fit. Relaxed through the hip, seat, and thigh. Two curved top-stitched inset pockets. Flare leg with vents. Tagless for even greater comfort.

54% rayon/44% polyester/2% spandex

Regular: XS-5XL (31½" inseam)*

Petite: PXS-P3X (28½" inseam)*

Tall: TXS-TXL (33½" inseam)*

White available in XS-3XL*





A. 9871 | "Aubrey" Front Button Jacket

Throw some extra style into your rotation with our flattering "Aubrey" round neckline jacket. This jacket will keep you ready for anything with a six-button front closure and two deep top-load pockets, as well as a side pocket with instrument division. Gain added security with a 2"x2" rib knit cuff on the sleeve opening. Side slits keep you moving with ease.

**54% rayon/
44% polyester/2% spandex**
Sizes: XS-3XL*
Medium length: 28 7/8"



B. 9550 | "Chloe" Sweetheart Neck Tunic

Sweetheart-shaped neckline and two double pockets with flat binding detail. Front and back waist darts for contouring. Pockets feature logo rivet at side seams. Left pocket has fabric accessory loop.

54% rayon/44% polyester/2% spandex
Sizes: XS-5XL*
Medium length: 26 3/4"



MATERNITY

C. 9699 | Ultimate Maternity Top

This comfortable maternity top showcases our soft Urbane Ultimate fabric, inset crossover V-neckline with princess seams and forward shoulder yoke featuring self-loops on left for badge/pen holder. The self-tie adjustable empire waist was designed to accommodate your growing baby and the longer length covers your stomach nicely. And you'll really appreciate the angled top-entry pockets with layered pocket on right for extra storage. Ideal for moms-to-be.

54% rayon/44% polyester/2% spandex

Sizes: XS-XL*

Medium length: 29½"



MODERN



D. 9399 | Ultimate Maternity Pant

Comfort meets flattering style with this flare-leg silhouette pant featuring side vents and soft, stretchy knit waistband that can be worn flipped down or pulled up over stomach. Notched hip pockets with double cargo pockets on right, single cargo on left with self-loop badge/pen holder. Finally, maternity workwear you can wear all day long.

54% rayon/44% polyester/2% spandex

Sizes: XS-XL*

Medium inseam: 31½"



MODERN

D

*See color chart on page 14 for available sizes and colors.



TOP COLORS
& STYLES
P2=UP TO P2X
P3=UP TO P3X
T=UP TO TXL

MODERN FIT	MODERN FIT	MODERN FIT	MODERN FIT	MODERN FIT	MODERN FIT	MODERN FIT	CONTEMPORARY FIT	CONTEMPORARY FIT	CONTEMPORARY FIT	CONTEMPORARY FIT
9550 "Chloe" XS-SXL 26 7/8" LENGTH 54% RAYON/ 44% POLY/ 2% SPAN	9577 "Sophie" XS-SXL 26 7/8" LENGTH 54% RAYON/ 44% POLY/ 2% SPAN	9300 "Bailey" XS-SXL 31 1/2" INSEAM 54% RAYON/ 44% POLY/ 2% SPAN	9306 "Alexis" XS-SXL 31 1/2" INSEAM 54% RAYON/ 44% POLY/ 2% SPAN	9871 "Aubrey" XS-SXL 28 7/8" LENGTH 54% RAYON/ 44% POLY/ 2% SPAN	9699 Maternity top XS-XL 29 7/8" LENGTH 54% RAYON/ 44% POLY/ 2% SPAN	9599 Maternity pant XS-XL 31 1/2" INSEAM 54% RAYON/ 44% POLY/ 2% SPAN	9063 "Chelsea" XS-SXL 25 7/8" LENGTH 54% RAYON/ 44% POLY/ 2% SPAN	9329 "Taylor" XS-SXL 31" INSEAM 54% RAYON/ 44% POLY/ 2% SPAN	9062 "Leah" XS-SXL 27 7/8" LENGTH 54% RAYON/ 44% POLY/ 2% SPAN	9330 "Michelle" XS-SXL 31" INSEAM 54% RAYON/ 44% POLY/ 2% SPAN

Black BKAH			P3, T	P3, T					P3, T		P3, T
Navy BNAH			P3, T	P3, T					P3, T		P3, T
White WWAH			P3, T, †	XS-3X, P3, T							
Royal BEAH			P3, T	P3, T					P3, T		P3, T
Ceil BCAH			P3, T	P3, T					P3, T		P3, T
Steel STAH			P3, T	P3, T					P3, T		P3, T
Wine RWAH			P3, T	P3, T					P3, T		P3, T
Hunter GHAA				P3, T							
Teal BTAH			P3, T	P3, T							
Caribbean CBAH	†		P3, T	P3, T							
Galaxy BGAH				P3, T							
Sand SAAH	†		P3, T	P3, T							
Graphite GRAH			P3, T	P3, T							
Orchid VORAH	†	†	P3, T, †	P3, T, †							
Creamsicle OSCAH	†	†	P3, T, †	P3, T, †							
True Red TRAH				P3, T, †							
Primrose PRMAH			P3, T, †	P3, T							
JazzBerry JZFS				P3, T							
Turquoise GTUAH				P3, T							
African Violet PAVAH				P3, T, †							
Espresso BESAH		†		P3, T, †							
Blue Iris BIAH		†		P3, T, †							
Poppy PPPAH				P3, T, †							
Kelly GKAAH		†		P3, T, †							
Waterfall BWAH		†		P3, T, †							
Blaze OBAH		†		P3, T, †							
Spanish Moss GSMAH	†	†	P3, T, †	P3, T, †							
Brilliant Blue BBBAH	†	†	P3, T, †	P3, T, †							
Persimmon PSMAH	†	†	P3, T, †	P3, T, †							
NEW Cabernet RCAH			P3, T	P3, T					P3, T		P3, T
Primrose/Black PRBKU											
Black/Primrose BKPRU											
Navy/Ceil BNBCU											
Royal/Lime BELMU											
Ceil/Navy BCBNU											
Graphite/Papaya GROPU											
Steel/Pearl Pink STPKU											
True Red/Black TRBKU											
Aqua/Steel AQSTU											

†While supplies last.

Landau Group Guarantee

Landau Guaranteed product that is always available,
in a variety of styles and sizes to fit every budget.

urbaneTM men

Urbane is proud to roll out our new line of men's workwear with trendy, functional designs, soft stretch fabrics, and cooling technology. Now men can take advantage of the Urbane difference no matter how hectic the day gets.

NEW A. 9150 | Men's Quick Cool V-Neck

It's everything you want in a men's top. This great-looking V-neck features Quick Cool knit panels on the sides, under the arm and on the back yoke to keep you cool and dry all day long. Features chest pocket, stitch detailing and self-tab loop with eyelet detail for badges and pens.

95% polyester/5% spandex

Sizes: SML-3XL*

Medium length: 29"



B

Men's Styles 9150 and 9250 available in colors:

Black BKFS

Navy BNFS

Royal BEFS

Steel STFS

NEW B. 9250 | Men's Quick Cool 7-Pocket Pant

Finally, pants with a lot of pockets. These full elastic-waist pants feature Quick Cool knit panels on pant leg sides, silicone drawstring for a secure tie, belt loops, snap-front and functional fly. Complete with 7-pockets including dual hip pockets, two cargo pockets, two back pockets and an invisible zip pocket.

95% polyester/5% spandex

SML-3XL (31½" inseam)*

SSM-S3X (29" inseam)

TSM-TXL (33½" inseam)



Ultra

COLLECTION

A. 9044 | "Julie" Classic 4-Pocket Tunic

Classic style with innovative functionality. This top features double top-entry pockets with instrument division. The wearer's right pocket has three grosgrain pen loops with contrast triple stitching, and the left pocket includes a badge clip. Front bust darts and back princess seams offer contouring, while the contrast stitching on the side seams adds pops of color.

**54% rayon/44% polyester/
2% spandex**

**Sizes: XS–3XL
Medium length: 26½"**



A

MODERN



MODERN

B

B. 9318 | "Natalie"
Contemporary Drawstring Pant

Show your style with this modern, slim-fit pant with full drawstring waist. It's anchored and exposed on the back waist for a hint of color. A contemporary cut on the hip and thigh complement the moto-inspired knee-seaming detail. The straight leg silhouette is accented with side vents and a single back pocket. Grosgrain badge tab on the hip is highlighted by contrast triple-needle stitching. Fun touches of color are added with a silicone U-Daisy on the hip and contrast stitching on the full elastic waistband.

54% rayon/44% polyester/2% spandex

Regular: XS–3XL
(31½" inseam)*
Petite: PXS–P2X
(29" inseam)*
Tall: TXS–TXL
(33½" inseam)*



DETAILS MAKE THE DIFFERENCE

A

MODERN

A. 9045 | "Melissa" Surplice Top

Featuring Ultra's signature contrast stitching, this surplice scrub top offers a crossover neckline, two front top-entry pockets (with instrument divider), plus dual color eyelets and two-toned cording. A badge clip on the pocket provides additional storage options, while a drop tail hem, with interior contrast stitching, provides you added coverage in style.

54% rayon/44% poly/2% spandex

Sizes: XS-3XL*

Medium length: 28¾"



B. 9322 | "Rebecca" Contrast Waist Pant

Enjoy a natural rise fit with the waist flipped up, or a modern rise with contrast knit when the waist is flipped down. However you wear it, the side slits provide easy movement. A full drawstring waist with two-toned drawstring and side pockets with contrast stitching on the band add a little touch of style. A hidden waistband pocket, two top-load cargo pockets—one featuring instrument dividers—provide added storage and convenience.

54% rayon/44% polyester/2% spandex

Regular: XS-3XL (31" inseam)*

Petite: PXS-P2X (29" inseam)*

Tall: TXS-TXL (33½" inseam)*



MODERN

B



C

CONTEMPORARY

C. 9873 | "Kristen" Knit Zip Front Jacket

This sport-inspired zip-front jacket with contrast stitching on the neckline and zipper panel is an everyday essential. Eye-catching details continue with dual-color eyelets and a two-toned badge cord. The jacket also offers two front hand pockets and half-rib knit cuff.

92% polyester/8% spandex

Sizes: XS-3XL*

Medium length: 27³/₈"



Ultra COLLECTION COLOR CHART

COLORS & STYLES
P2=UP TO P2X
T=UP TO TXL



MODERN FIT

9045
"MELISSA"
XS-3XL
28³/₄" LENGTH



MODERN FIT

9044
"JULIE"
XS-3XL
26³/₄" LENGTH



MODERN FIT

9318
"NATALIE"
XS-3XL
31¹/₂" LENGTH



MODERN FIT

9322
"REBECCA"
XS-3XL
31" LENGTH



CONTEMPORARY FIT

9873
"KRISTEN"
XS-3XL
27³/₈" LENGTH

	9045 "MELISSA" XS-3XL 28 ³ / ₄ " LENGTH	9044 "JULIE" XS-3XL 26 ³ / ₄ " LENGTH	9318 "NATALIE" XS-3XL 31 ¹ / ₂ " LENGTH	9322 "REBECCA" XS-3XL 31" LENGTH	9873 "KRISTEN" XS-3XL 27 ³ / ₈ " LENGTH
Black/Pear BKGPS			P2, T	P2, T, †	†
Navy/Cherry Blossom BNPCS			P2, T	P2, T, †	†
Steel/Yellow STYES			P2, T	P2, T, †	†
Orchid/ Sky Blue VOSBS			P2, T		
Yellow/Orchid YLVOS			P2, T		
Primrose/Black PRBKS			P2, T		
Graphite/Blaze GROBS	†			P2, T, †	
African Violet/Parrot Green PAGPS			P2, T		
Ceil/Papaya BCOPS			P2, T		
Blaze/African Violet OBPAS	†			P2, T, †	†
Galaxy/Yellow BGYLS				P2, T, †	†
JazzBerry/Blaze JZOBs	†			P2, T, †	†
Persimmon/Teal PSBTS	†			P2, T, †	
NEW Caribbean/Tigerlily CBOTS		*	P2, T*		
NEW Cabernet/Teal RCBTS		**	P2, T**		

* = FALL 1 ** = Fall 2 † While supplies last.

urbane performance™

ActiVent

Our unique ventilation technology designed to keep you cool and comfortable throughout even your busiest workday.

A. 9059 | ActiVent V-Neck Tunic

Take on your day in style with a top that can keep up with you. Our ActiVent V-neck tunic is built for the challenge with micro-perforated panels at back yoke and under arms to ensure you stay cool all day. Angled top-entry pockets and accessory pockets provide storage for whatever you need while front princess and back waist seams add shape.

95% polyester/5% spandex

Sizes: XS-3XL*

Medium length: 28³/₈"

MODERN

A



Back detail



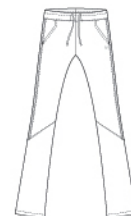
Side detail





B. 9327 | ActiVent Track Pant

Tackle any task in our ActiVent Track Pant with micro-perforated panels on outside pant legs to keep you looking and feeling cool. This versatile pant offers adjustable leg openings that allow you to create a tapered or flared leg look using our unique leg snaps. Complete with a natural rise, full elastic waistband and no-slip drawstring, this pant is sure to provide a comfortable fit.



95% polyester/5% spandex

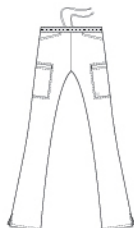
Regular: XS–3XL (31" inseam)*

Petite: PXS–P2X (29½" inseam)*

Tall: TXS–TXL (34½" inseam)*

C. 9328 | ActiVent Cargo Pant

Your day just got better with our ActiVent Cargo Pant. This pant comes equipped with micro-perforated panels at waist, back yoke and behind knee to keep you cool all day long. Elastic back and no-slip internal drawstring provide comfort while supporting full-range movement. Two slant angle hip pockets and two inset cargo pockets also offer you storage to spare.

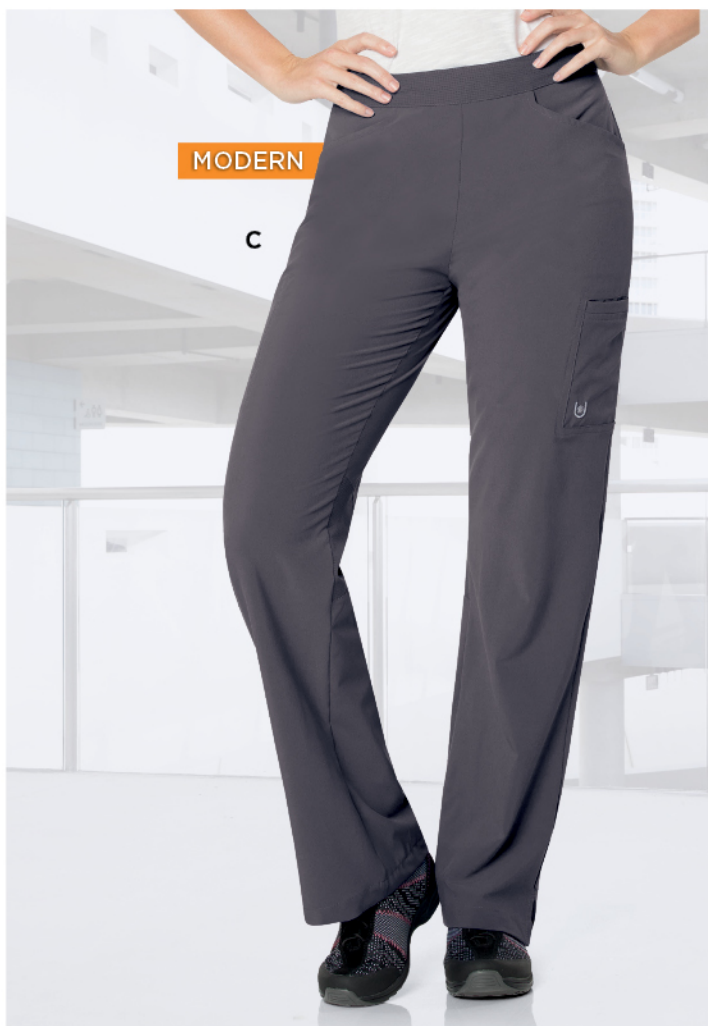


95% polyester/5% spandex

Regular: XS–3XL (31½" inseam)*

Petite: PXS–P2X (29" inseam)*

Tall: TXS–TXL (36" inseam)*



D. 9060 | ActiVent Cool Panel Top

Stay on top of your game in our ActiVent Cool Panel V-neck top created for maximum comfort. Featuring micro-perforated panels at back yoke, under arms and on shoulders to ensure you're cool and comfortable throughout the day. Complete with center front and back ActiVent panels and side slits that provide a fantastic, stylish look and fit. Plus, top-entry pockets give you all the storage space you need.



95% polyester/5% spandex

Sizes: XS–3XL*

Medium length: 26⅞"

*See color chart on page 32 for available sizes and colors.

MAINTAIN YOUR COOL

urbane performance™
QUICK*COOL

A. 9046 | Quick Cool Crossover

There's no need to choose between functionality and comfort in this crossover. Featuring our new Quick Cool knit back panel for optimal comfort, this top can take on your busiest days. But it doesn't stop there; details like the curved side vents and a drop tail hem add the flair that makes your scrubs stand out. Two double pockets round it out with plenty of space for all your workday essentials.

95% polyester/5% spandex

Sizes: XS-3XL*

Medium length: 28 $\frac{7}{8}$ "

MODERN

A



Back detail



Pocket & drop
tail hem



B. 9876 | Jacket

Everybody loves Quick Cool! That's why we're rolling out this fabulously functional jacket featuring Quick Cool technology. This jacket offers stylish quick-dry fabric on the sleeves, neck and back yoke to keep you cool and dry all day long. A great-looking mock neck, raglan sleeve and zip-front with zipper garage for comfort, plus high-low hem that offers extra coverage in back. And there's no shortage of storage with angled top-entry pockets with double pockets on the right. It may well be the coolest jacket ever made!

95% polyester/5% spandex

Sizes: XS-3XL*

Medium length: 27 1/8"



MODERN

B



Back detail



Detail of zipper



High-low hem

urbane performance™
QUICK*COOL

Keep cool with strategically placed knit panels that feature quick-dry technology to ensure you stay cool and dry all day long.

MODERN

A. 9047 | Quick Cool Sport Tunic

This V-neck sport tunic offers you nothing but comfort. Flattering princess seams with Quick Cool knit panels at back yoke and underarms to ensure you'll stay cool. Baby sleeve pocket and two top-entry pockets provide extra storage and accessibility, while extra badge and accessory loops keep your necessities close at hand. Top it off with a drop tail hem to keep you covered for one truly functional tunic.

95% polyester/5% spandex

Sizes: XS–3XL*

Medium length: 27⅞"





MODERN

B



MODERN

C

B. 9324 | Quick Cool Convertible Jogger

Now you can stay cool and confident in our natural-rise pants with Quick Cool knit back yoke and waistband. The tunneled elastic waistband with drawstring and adjustable bungee leg openings ensures a comfortable fit, while two applied hip pockets and two welt cargo pockets offer you optimal storage space.

95% polyester/5% spandex

Regular: XS–3XL (31½" inseam)*

Petite: PXS–P2X (29" inseam)*

Tall: TXS–TXL (33½" inseam)*



C. 9323 | Quick Cool Cargo

Switch up your style with these comfy cargos! These modern rise pants feature a zippered leg opening that allows you to easily alternate between a classic straight leg and a slight flare. Achieve maximum comfort with our Quick Cool knit fabric and dual elastic waistband with tunneled drawstring. Extra pockets, including two side hand pockets and two top cargo pockets with badge and accessory loop, ensure maximum storage.

95% polyester/5% spandex

Regular: XS–3XL (31¼" inseam)*

Petite: PXS–P2X (28¾" inseam)*

Tall: TXS–TXL (33¼" inseam)*



STYLE FOR DAYS

MODERN

A

A. 9015 | "Motivate" V-Neck Top

Keep it simple and sporty with this tonal stitched set-in V-neckline with bust darts. Tonal stitched arms. Two angled welt pockets plus an additional welt pocket with interior mesh lining. Back waist darts for contouring. Side slits at hem feature interior mesh detail and tonal stitching.

95% polyester/5% spandex

Sizes: XS-5XL*

Medium length: 26"





MODERN

B

B. 9014 | "Propel" Surplice Top

Bound surplice features front princess seam styling. Back waist darts enhance style. Tonal stitched arms. Top-entry bound, curved pockets, plus an additional welt pocket with interior mesh lining and tonal stitching. Side slits at hem feature interior mesh detail and tonal stitching.

95% polyester/5% spandex

Sizes: XS–5XL*

Medium length: 26 5/8"



C. 9312 | "Endurance" Cargo Pant

A yoga-inspired cargo pant that'll keep you feeling energized all day. Combination drawstring front and elastic-back waist. Sits comfortably at waist. Two back darts designed to contour while staying relaxed through hips and thighs. Slanted front pockets feature tonal stitching.

95% polyester/5% spandex

Regular: XS–5XL (31 1/2" inseam)*

Petite: PXS–P2X (29" inseam)*

Tall: TXS–TXL (33 1/2" inseam)*



MODERN

C





A. 9058 | "Resolve" Top

Looking for workwear that wears well? We've got the top for you. Sweetheart neckline with soft knit banding creates a fantastic look, and bust darts and back waist darts provide a flattering fit. Knit-detailed side vents allow for free and easy movement, and you'll love the inset top-entry pockets with silver mesh lined zip welt accessory pocket on right. Fit, feel and functionality all come together to make a perfect top.

95% polyester/5% spandex

Sizes: XS-5XL*

Medium length: 25½"



B. 9733 | "Actuate" Pant

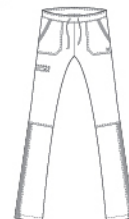
Take on your busy day in modern straight-leg pants designed to keep you on the move. Featuring a drawstring front and elastic-back waist, side vents, and back darts to create a flattering look with a full range of movement. This pant also features knee seams and knit inset track stripes for that sporty look. But there's more: top-applied hip pockets with knit pocket banding, plus a zip welt cargo pocket! You'll want to wear them every time you head to work.

95% polyester/5% spandex

Regular: XS-5XL (31½" inseam)*

Petite: PXS-P2X (29" inseam)*

Tall: TXS-TXL (33" inseam)*



Featuring



Locking zipper
includes earbud clip

MODERN

C. 9872 | "Empower" P-Tech Warm-up

P-Tech Warm-up is a modern warm-up jacket that combines performance fabric and an innovative personal electronic device (PED) cord management system. This jacket features princess seams and a mock neck. Two deep pockets plus a PED pocket are included to provide storage, while our innovative zipper pull keeps your PED cords in place. Wicking finish to keep you dry on your busiest of days.

100% polyester
(single-sided fleece)

Sizes: XS-2XL*

Medium length: 27"





The comfort of your traditional poplin scrubs with a soft hand feel and just enough stretch to keep you going.

MODERN

A

MODERN

B

A. 9325 | UFlex Drawstring Pant

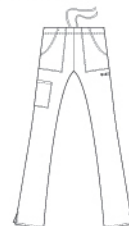
Move throughout your work day with ease in some of our most comfortable pants yet. Featuring a relaxed fit, this natural flare UFlex drawstring pant with elastic back has back darts for an even more comfortable fit. Two hip pockets, a cargo pocket on wearer's right and a badge loop on the left offer plenty of storage space. Side slits at hem provide added ease of movement.

54% cotton/43% polyester/3% spandex with a soft hand finish

Regular: XS-5XL (31" inseam)*

Petite: PXS-P2X (28½" inseam)*

Tall: TXS-TXL (33" inseam)*



B. 9326 | UFlex Cargo Pant

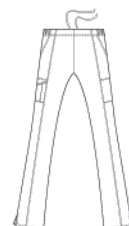
Our modern flare UFlex cargo pant fits comfortably thanks to a full drawstring waist with elastic back. Side slits offer easy movement. Storage is made simple thanks to two hip pockets, two cargo pockets with an extra accessory pocket on wearer's right and self-fabric loop.

54% cotton/43% polyester/3% spandex with a soft-hand finish

Regular: XS-5XL (31" inseam)*

Petite: PXS-P2X (28½" inseam)*

Tall: TXS-TXL (33" inseam)*





MODERN

C

C. 9874 | UFlex Crewneck Warm-up

Add an extra layer of style to your look in our comfortable UFlex crewneck warm-up. This warm-up means business with snap front closure and top load pockets, double top load pocket on wearer's right, an extra accessory pocket on the left, and a self-fabric loop. Side slits keep you comfortable and moving with ease, while details like rib knit cuffs and back darts keep you feeling stylish.

54% cotton/43% polyester/3% spandex with a soft-hand finish

Sizes: XS–5XL*

Medium length: 28 $\frac{7}{8}$ "



D. 9049 | UFlex Crossover V-Neck Top

Our innovative UFlex fabric meets our classic crossover style. This V-neck top with flat piping is available in solid or contrast options. Empire seaming and front and back waist darts contour, while side slits allow you extra room to move with ease. Keep your hands free thanks to two roomy top-load pockets with an extra accessory pocket and extra self-fabric loop; both on wearer's left.

54% cotton/43% polyester/3% spandex with a soft hand finish

Sizes: XS–5XL*

Medium length: 27 $\frac{1}{8}$ "



MODERN

D

E. 9048 | UFlex V-Neck Tunic

Show off your style in our UFlex V-neck tunic featuring princess and shoulder seams that work together to create a streamlined look. Two roomy top-load pockets and an extra accessory pocket on wearer's left provide generous storage space, while self-fabric loop offers plenty of room for badges and pens. Stay comfortable all day thanks to side slits that make movement easy.

54% cotton/43% polyester/3% spandex with a soft-hand finish

Sizes: XS–5XL*

Medium length: 26 $\frac{3}{8}$ "



MODERN

E

*See color chart on page 33 for available sizes and colors.



urbane performance[®] ActiVent

COLORS
& STYLES
P2=Up to P2X
T=Up to TXL

				
	MODERN FIT	MODERN FIT	MODERN FIT	MODERN FIT
	9059 XS-3XL 28 3/4" LENGTH 95% POLY/ 5% SPANDEX	9060 XS-3XL 26 1/4" LENGTH 95% POLY/ 5% SPANDEX	9327 XS-3XL 31" INSEAM 95% POLY/ 5% SPANDEX	9328 XS-3XL 31 1/2" INSEAM 95% POLY/ 5% SPANDEX
Black BKFS			P2, T	P2, T
Ceil BCFS			P2, T	P2, T
Navy BNFS			P2, T	P2, T
Orchid VORFS			P2, T	P2, T
Royal BEFS			P2, T	P2, T
Steel STFS			P2, T	P2, T

urbane[™] performance

COLORS
& STYLES
P2=UP TO P2X
T=UP TO TXL

						
	MODERN FIT	MODERN FIT	MODERN FIT	MODERN FIT	MODERN FIT	MODERN FIT
	9014 "PROPEL" XS-5XL 26 3/4" LENGTH 95% POLY/ 5% SPANDEX	9058 "RESOLVE" XS-5XL 25 1/4" LENGTH 95% POLY/ 5% SPANDEX	9015 "MOTIVATE" XS-5XL 26" LENGTH 95% POLY/ 5% SPANDEX	9312 "ENDURANCE" XS-5XL 31 1/2" INSEAM 95% POLY/ 5% SPANDEX	9733 "ACTUATE" XS-5XL 31 1/2" INSEAM 95% POLY/ 5% SPANDEX	9872 "EMPOWER" XS-2XL 27" LENGTH 100% POLYESTER
Black BKFS	†	†		P2, T	P2, T	
Navy BNFS	†	†		P2, T	P2, T	
White WWFS				P2, T		
Royal BEFS	†	†		P2, T	P2, T	
Steel STFS	†			P2, T		
Hunter GHFS	†			P2, T		
Galaxy BGFS				P2, T		
Graphite GRFS	†	†		P2, T	P2, T	
JazzBerry JZFS				P2, T		
Mediterranean MEBFS				P2, T		
African Violet PAVFS				P2, T		
Kelly GKFS			†	P2, T, †		
Ceil BCFS				P2, T		
Lipstick RLFS			†	P2, T, †		
Orchid VORFS		†	†	P2, T, †	P2, T, †	
NEW Purple Reign BPRFS				P2, T		

Landau Group Guarantee

Landau Guaranteed product that is always available,
in a variety of styles and sizes to fit every budget.

†While supplies last.

urbane performance[®]
QUICK-COOL

COLORS
& STYLES
P2=UP TO P2X
T=UP TO TXL



MODERN FIT

MODERN FIT

MODERN FIT

MODERN FIT

MODERN FIT

9047
XS-3XL
27 1/4" LENGTH
95% POLY/
5% SPANDEX

9046
XS-3XL
28 1/4" LENGTH
95% POLY/
5% SPANDEX

9324
XS-3XL
31 1/2" INSEAM
95% POLY/
5% SPANDEX

9323
XS-3XL
31 1/2" INSEAM
95% POLY/
5% SPANDEX

9876
XS-3XL
27 1/4" LENGTH
95% POLY/
5% SPANDEX

Black BKFS			P2, T	P2, T	
Navy BNFS			P2, T	P2, T	
Royal BEFS			P2, T	P2, T	
JazzBerry JZFS	†	†	P2, T,†	P2, T,†	
Mediterranean MEBFS			P2, T	P2, T	
Orchid VORFS	†	†	P2, T,†	P2, T,†	
African Violet PAVFS			P2, T	P2, T	
Ceil BCFS			P2, T	P2, T	
NEW Wine RWFS			P2, T	P2, T	
NEW Steel STFS			P2, T	P2, T	

UFlex[™]
by Urbane[®]

COLORS
& STYLES
P2=UP TO P2X
T=UP TO TXL



MODERN FIT

MODERN FIT

MODERN FIT

MODERN FIT

MODERN FIT

9049*
XS-5XL
27 1/4" LENGTH
54% COTTON/
43% POLY/
3% SPANDEX

9048
XS-5XL
26 1/4" LENGTH
54% COTTON/
43% POLY/
3% SPANDEX

9326
XS-5XL
31" INSEAM
54% COTTON/
43% POLY/
3% SPANDEX

9325
XS-5XL
31" INSEAM
54% COTTON/
43% POLY/
3% SPANDEX

9874
XS-5XL
28 1/4" LENGTH
54% COTTON/
43% POLY/
3% SPANDEX

Black BKNT			P2, T	P2, T	
Navy BNNT			P2, T	P2, T	
Royal BENT			P2, T	P2, T	
Steel STNT	†		P2, T	P2, T	
Graphite GRNT			P2, T	P2, T	
Ceil BCNT			P2, T	P2, T	
Grape RPNT	†		P2, T	P2, T	
Persimmon PSMNT	†	†	P2, T,†	P2, T,†	†
Creamsicle BEOCT					
Primrose PRMNT		†	P2, T,†	P2, T,†	
Wine RWNT	†		P2, T	P2, T	
Ceil/Navy BCBNT	†				
Persim./Steel PMSST	†				
Primrose/Aqua PRAQT	†				
Royal/Lime BELMT	†				
Steel/Aqua STAQT	†				
Navy/Ceil BNBCT	†				
Steel/Pearl Pink STPKT					
Black/Primrose BKPRT	†				
Royal/Creamsicle BEOCT	†				

*Style 9049 offered in solids as well as Contrast trims.
†While supplies last.



A. 9875 | Media Lab Coat

The perfect lab coat is here. The top-applied stitched-down collar and lapel keep you looking sharp, and the four-button placket with front and back waist darts provides a super-flattering fit. Side vents allow for full-range movement, and sleeve vent with faux two-button closure and back yoke makes for a professional presentation. And, we didn't forget the pockets. This lab coat features oversized top entry pockets with layered welt pockets, including instrument divider and internal tablet-sized pocket on left.

53% cotton/44% polyester/3% spandex

Sizes: XS-2XL
White (WWCV)
Medium length: 32½"



B. 9607 | Lab Jacket

A modern, minimalist design makes this the most professional looking coat in the lab. Innovative sleeve design featuring hidden stockinette cuffs to keep sleeves out of the way. High collarless neckline, signature button closure, princess seams, set-in waistband and four lower pockets. Back fitted darts and vent.

65% polyester/35% cotton

Sizes: XS-2XL
White (WWXY)
Medium length: 31½"





C. 9534 | Double Pocket Crossover Top

An updated Urbane classic featuring two deep pockets to keep your hands free and a relaxed fit for ease of movement. Available with contrast piping and in solid colors.

65% polyester/35% cotton

Select colors in 60% cotton/40% polyester**

Sizes: XS–3XL

Medium length: 27½"



9534 available in colors listed in order of popularity

Royal BEP	True Red/Black TRBKP
Navy BNP	Ceil/Navy BCBNP
Black BKP †	Steel/Pearl Pink STPKP
White WWXY	Royal/Lime BELMP
Ceil BCP	Black/Primrose BKPRP †
Steel STP	Papaya/Harbor Blue OPHCP** †
Wine RWP	Black/Cherry Blossom BKPCP †
Galaxy BGP	Mediterranean/Lime MELMP †
Hunter GHP †	Wine/Caribbean RWCBP †
Graphite GRP	Arctic Ice/Chocolate ASDCP †
Navy/Ceil BNBCP	Strawberry/Lime RELMP †
Caribbean/Aqua CBAQP	Chocolate/Aqua DCAQP †
Steel/Aqua STAQP	

D. 9502 | Relaxed Drawstring Pant*

A perennial favorite that features a natural fit, straight leg pant without side seams for an unbroken silhouette. Sits comfortably at the waist and adjusts easily with full drawstring. Rounded saddle engineered to contour while staying relaxed through thigh and leg for all-day comfort.

65% polyester/35% cotton

Select colors in 60% cotton/40% polyester**

Regular: XS–2XL (31½" inseam)

Petite: PXS–P2X (29" inseam)

Tall: TXS–TXL (33½" inseam)



9502 available in colors listed in order of popularity

Black BKP	3X, P2, T†	Hunter GHP	P2, T
Navy BNP	3X, P2, T†	Grape RPP	P2, T, †
Steel STP	3X, P2, T†	White WWXY	3X, P2, T†
Royal BEP	3X, P2, T†	Poppy PPOP	P2, T
Ceil BCP	3X, P2, T†	Carnation PACP**	P2, T, †
Galaxy BGP	P2, T†	Teal BTP	P2, T
Wine RWP	3X, P2, T†	Sandstone SAP	3X, P2, T†
Caribbean CBP	P2, T†	Scuba BSBCP**	P2, T, †
Patriot BPP	P2, T†	Mystic Violet PMVP	3X, P3, T
Graphite GRP	3X, P3, T		

*9502 PXXS available in: Black, Navy, Steel, Royal, Ceil.

†9502 XXS available in: Black, Navy, Steel, Royal, Ceil, Galaxy, Wine, Caribbean, Patriot, White, Carnation, Sandstone.

**60% cotton/40% polyester

†While supplies last.

